

The Garden of Medicine

By Annette Argabright



January 18, 2022

Framework: CEAP(ER)

Part Two

A

Apply the Ethics and Principles

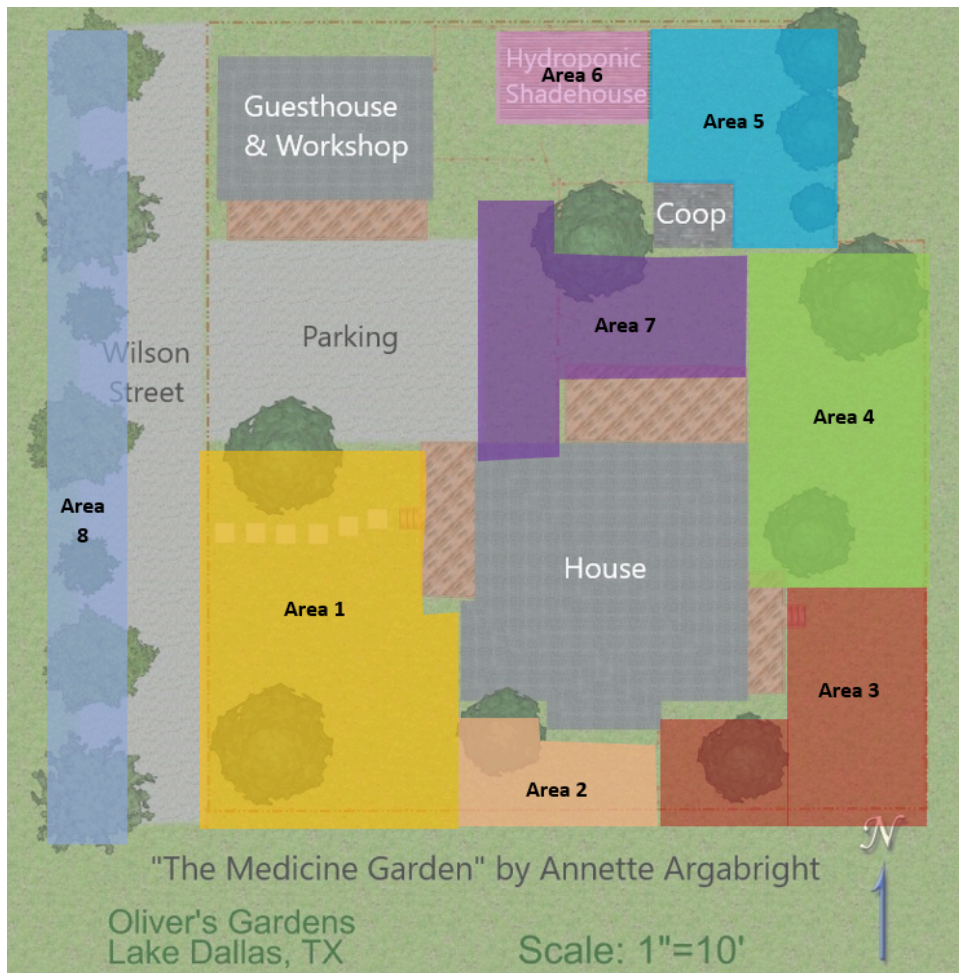
Ethic or Principle	How did I use it?
Earth Care	According to the soil samples, I need to add more compost to the soil. I'll do that and add nitrogen fixer plants to my considerations. Encouraging pollinators will give them food and shelter in a chemical free zone. Improving the irrigation methods will fill the water table, and feed the plants and pollinators. All of this will build the ecosystem which will continue to feed the soil, which will in turn produce healthier medicine.
People Care	Creating a lush garden filled with food, medicine, texture and smell offers peace to those who enter it. Including art adds another dimension and encourages one to slow down, relax and enjoy. The plants themselves offer food and medicine in the form of teas, tonics or salves. The herbs or the products can be shared with others.
Fair Share	The pathways can be shared with those who visit. Medicine can be shared with those who need it. And culinary herbs can be shared with anyone who asks. Teaching permaculture classes to families teaches others how to grow their own.
Observe and Interact	I have been observing this area for almost 5 years. Every time I have moved forward with what I want I run into issues. This past year I have let the spaces speak to me, interacted with them and now will try to blend my desires with theirs.

Catch and Store Energy	Growing medicine and knowing the plants stores and releases incredible energy even prior to harvesting. Upon harvesting, the plants offer energy in the form of food or medicine. When shared with others there is another energy in the building of community.
Obtain a Yield	The potential yield is more than imagined; medicine, food, beauty, peace, inspiration.
Apply Self Regulation and Accept Feedback	Forging ahead has met with some success and some resistance. I am accepting that more attention is needed with water flow issues and my care limits pertaining to plant choices. I also need to interact with my spaces more to observe their needs. Changes in our lives need to be reflected in the criteria. Simplifying is also feedback.
Use & Value Renewable Resources & Services	I am trying to use resources that I already have or that have been given to me for aesthetic elements. I am able to lean on the knowledge I've already received through books, notes, videos and mentorship to guide me.
Design From Patterns to Details	The overall pattern is to offer peace and healing through the plants, the food and products created with them, and the spaces for people to wander around.
Use Small & Slow Solutions	It's been almost 5 years since this began. While I would prefer to forge ahead, I've been forced to slow down. For each garden space I need to use small and slow solutions to have long lasting results.
Use Edges & Value the Marginal	Some edges used are the fenceline for wall pockets, the edges of the spirals for plants to spill over, unique transitions between gardens for interest. The areas of my mind where I get stuck or am unsure of what to do are also edges. There, great ideas grow and new directions form. The new edges of life change are creating new opportunities.
Creatively Use & Respond to Change	Originally I wanted to grow food only, but I am surrounded by beautiful trees that have continued to shade out my gardens. Herbs and native pollinators that can tolerate some

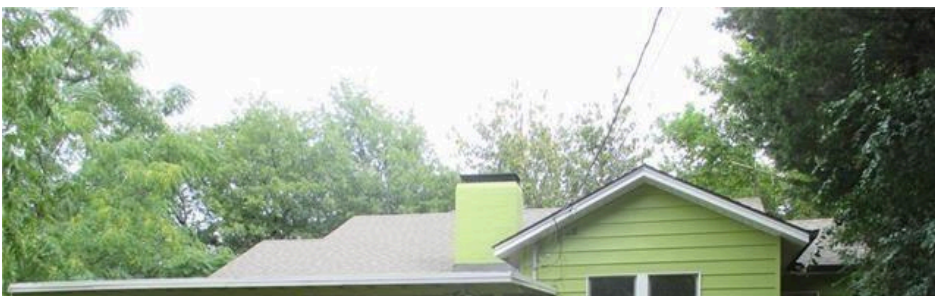
shade are my response to that change.

P

Plan and Implement



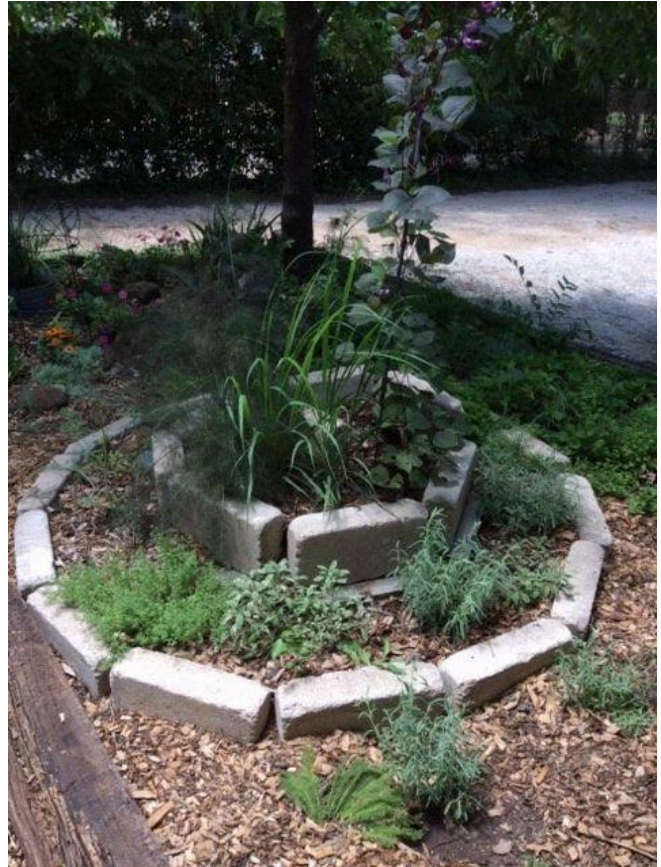
Area 1



When purchased in 2016, the Front Welcome Garden (Area 1) was compacted soil.

After layering and amending the soil with lots of love, April 2019







This area has received the most attention. The primary goal here is to fill in the final plants and add in more compost and mulch.

Plant List for Area 1

Plant	Latin Name	Existing	# Needed	Height	USD Cost (x \$9 for plant or \$3 for seeds)	GBP Conversion
American Beautyberry	<i>Callicarpa americana</i>	X	0	6'	\$0.00	£0.00
Anise Hyssop	<i>Agastache foeniculum</i>	X	3	3'	\$3.00	£4.11
Betony	<i>Stachys officinalis</i>	X	0	3'	\$0.00	£0.00
Blue Flag Iris	<i>Iris versicolor</i>	X	0	2-3'	\$0.00	£0.00
Borage	<i>Borago officinalis</i>		4	2'	\$3.00	£4.11
Calendula	<i>Calendula officinalis</i>		20	2'	\$3.00	£4.11
Catnip	<i>Nepeta cataria</i>	X	0	3'	\$0.00	£0.00
Chamomile	<i>chamomilla</i>		5	3'	\$3.00	£4.11
Chives	<i>Allium schoenoprasum</i>	X	0	2'	\$0.00	£0.00
Cilantro	<i>Coriandrum sativum</i>		3	3'	\$3.00	£4.11
Comfrey	<i>Symphytum officinale</i>	X	0	3'	\$0.00	£0.00
Dandelion	<i>Taraxacum officinale</i>	X	0	1'	\$0.00	£0.00
Elderberry	<i>Sambucus nigra</i>	X	0	5'	\$0.00	£0.00
Fennel	<i>Foeniculum vulgare</i>	X	2	4'	\$3.00	£4.11
Lambs Ear	<i>Stachys byzantina</i>	X	0	1'	\$0.00	£0.00
Lemon Balm	<i>Melissa officinalis</i>	X	0	2'	\$0.00	£0.00
Lemon Grass	<i>Cymbopogon citratus</i>		2	4'	\$18.00	£24.66
MarshMallow	<i>Althaea officinalis</i>	X	0	4'	\$0.00	£0.00
Mullein	<i>Verbascum thapsus</i>		1	5'	\$9.00	£12.33
Nasturtium	<i>Nasturtium Officinale</i>		2	3'	\$3.00	£4.11
Oregano	<i>Origanum vulgare</i>	X	0	1'	\$0.00	£0.00
Red Clover	<i>Trifolium pratense</i>		6	3'	\$3.00	£4.11

Sage	<i>salvia</i>	X	3	2'	\$3.00	£4.11
Spearmint	<i>Mentha spicata</i>		1	2'	\$3.00	£4.11
Spiderwort	<i>Tradescantia occidentali</i>		3	2'	\$27.00	£36.99
St. John's Wort	<i>Hypericum perforatum</i>		3	2'	\$27.00	£36.99
Texas Star Hibiscus	<i>Hibiscus coccineus</i>	X	0	4'	\$0.00	£0.00
Thyme	<i>Thymus vulgaris</i>		6	6"	\$3.00	£4.11
Wild Violet	<i>Viola sororia</i>	X	0	6"	\$0.00	£0.00
Wintergreen	<i>Gaultheria procumbens</i>		2	6"	\$3.00	£4.11
Yarrow	<i>Achillea millefolium</i>	X	0	3'	\$0.00	£0.00
Total			66		\$117.00	£160.29

Area 2

The Mystical Garden (Area 2) was open to the neighbor's property originally. After closing it in, this area became a perfect place for herbs and an artistic flare.



To prepare the space for the plants, the spirals needed to be rebuilt. The process was used for a [Patterns in Nature Spirals Video](#) for Permayouth Americas.



Plant List for Area 2

Plant	Latin Name	Existing	# Needed	Height	USD Cost (x \$9 for plant or \$3 for seeds)	GBP Conversion
Anise Hyssop	<i>Agastache foeniculum</i>		4	3'	\$3.00	£4.11
Betony	<i>Stachys officinalis</i>		1	3'	\$9.00	£12.33
Blue Vervain	<i>Verbena hastata</i>		3	4'	\$3.00	£4.11
Calendula	<i>Calendula officinalis</i>		10	2'	\$3.00	£4.11
California Poppy	<i>Eschscholzia Californica</i>		10	18"	\$3.00	£4.11
Chamomile	<i>chamomilla</i>		4	3'	\$3.00	£4.11
Chickweed	<i>Stellaria media</i>	X	0	2'	\$0.00	£0.00
Chives	<i>Allium schoenoprasum</i>	X	2	2'	\$3.00	£4.11
Cilantro	<i>Coriandrum sativum</i>		4	3'	\$3.00	£4.11
Clary Sage	<i>Salvia sclarea</i>		2	4'	\$3.00	£4.11
Cleavers	<i>Galium aparine</i>	X	0	3'	\$0.00	£0.00
Comfrey	<i>Symphytum officinale</i>	X	1	3'	\$9.00	£12.33
Dandelion	<i>Taraxacum officinale</i>	X	0	1'	\$0.00	£0.00
Echinacea	<i>Echinacea purpurea</i>		3	3'	\$27.00	£36.99
Fennel	<i>Foeniculum vulgare</i>	X	1	4'	\$3.00	£4.11
Feverfew (Bachelor Buttons)	<i>Tanacetum parthenium</i>		10	20"	\$3.00	£4.11
Lavender	<i>Lavandula angustifolia</i>		3	3'	\$3.00	£4.11
Lemon Balm	<i>Melissa officinalis</i>	X	2	2'	\$3.00	£4.11
Lemon Thyme	<i>Thymus ×citriodorus</i>		5	6"	\$3.00	£4.11

Lemon Verbena	<i>Aloysia triphylla</i>	X	0	4'	\$0.00	£0.00
Mexican Petunia	<i>Ruellia sp</i>		2	3'	\$18.00	£24.66
Motherwort	<i>Leonurus cardiaca</i>		4	2.5'	\$3.00	£4.11
Mullein	<i>Verbascum thapsus</i>		2	5'	\$18.00	£24.66
Nasturtium	<i>Nasturtium Officinale</i>		4	3'	\$3.00	£4.11
Oregano	<i>Origanum vulgare</i>		4	1'	\$3.00	£4.11
Passion Flower	<i>Passiflora</i>	X	0	Vines	\$0.00	£0.00
Rue	<i>Ruta graveolens</i>	X	0	3'	\$0.00	£0.00
Sage	<i>salvia</i>	X	4	2'	\$3.00	£4.11
Society Garlic	<i>Tulbaghia violacea</i>		2	3'	\$3.00	£4.11
Texas Star Hibiscus	<i>Hibiscus coccineus</i>		2	4'	\$18.00	£24.66
Thyme	<i>Thymus vulgaris</i>	X	4	6"	\$3.00	£4.11
Turk's Cap	<i>Malvaviscus arboreus</i>	X	0	4-5'	\$0.00	£0.00
Wild Violet	<i>Viola sororia</i>	X	0	6"	\$0.00	£0.00
Yarrow	<i>Achillea millefolium</i>	X	0	3'	\$0.00	£0.00
Total			93		\$156.00	£213.72

Area 3

The Secret Garden (Area 3) was a design in this diploma process through the Children in Permaculture Practitioner's course. (Design Tour).



Plant List for Area 3

Plant	Latin Name	Existing	# Needed	Height	USD Cost (x \$9 for plant or \$3 for seeds)	GBP Conversion
American Beautyberry	<i>Callicarpa americana</i>	X	0	6'	\$0.00	£0.00
Borage	<i>Borago officinalis</i>		3	2'	\$3.00	£4.11
Calendula	<i>Calendula officinalis</i>		15	2'	\$3.00	£4.11
California Poppy	<i>Eschscholzia Californica</i>		10	18"	\$3.00	£4.11
Chamomile	<i>chamomilla</i>		6	3'	\$3.00	£4.11
Chickweed	<i>Stellaria media</i>	X	0	2'	\$0.00	£0.00

Clary Sage	<i>Salvia sclarea</i>		2	4'	\$3.00	£4.11
Cleavers	<i>Galium aparine</i>	X	0	3'	\$0.00	£0.00
Comfrey	<i>Symphytum officinale</i>		4	3'	\$36.00	£49.32
Echinacea	<i>Echinacea purpurea</i>		2	3'	\$18.00	£24.66
Elderberry	<i>Sambucus nigra</i>	X	0	5'	\$0.00	£0.00
Feverfew (Bachelor Buttons)	<i>Tanacetum parthenium</i>		10	20"	\$3.00	£4.11
Lambs Ear	<i>Stachys byzantina</i>		2	1'	\$18.00	£24.66
Lemon Grass	<i>Cymbopogon citratus</i>		2	4'	\$3.00	£4.11
Lovage	<i>Levisticum officinale</i>		12	6'	\$3.00	£4.11
Motherwort	<i>Leonurus cardiaca</i>		3	2.5'	\$3.00	£4.11
Passion Flower	<i>Passiflora</i>		1	Vines	\$9.00	£12.33
Peppermint	<i>Mentha balsamea</i>		2	2'	\$3.00	£4.11
Pleurisy Root (Butterfly Weed)	<i>Asclepias tuberosa</i>		2	3'	\$18.00	£24.66
Red Clover	<i>Trifolium pratense</i>		6	3'	\$3.00	£4.11
Sage	<i>salvia</i>		6	2'	\$3.00	£4.11
Society Garlic	<i>Tulbaghia violacea</i>		3	3'	\$3.00	£4.11
Texas Star Hibiscus	<i>Hibiscus coccineus</i>		2	4'	\$18.00	£24.66
Turk's Cap	<i>Malvaviscus arboreus</i>	X	0	4-5'	\$0.00	£0.00
Wild Violet	<i>Viola sororia</i>	X	0	6"	\$0.00	£0.00
Yarrow	<i>Achillea millefolium</i>		2	3'	\$18.00	£24.66
Total			95		\$174.00	£238.38

Area 4

The Backyard Garden (Area 4) tends to be a play area and main passageway.



Plant List for Area 4

Plant	Latin Name	Existing	# Needed	Height	USD Cost (x \$9 for plant or \$3 for seeds)	GBP Conversion
American Beautyberry	<i>Callicarpa americana</i>	X	0	6'	0	£0.00
Ashwaganda	<i>Withania somnifera</i>		3	3'	3	£4.11
Blue Flag Iris	<i>Iris versicolor</i>		3	2-3'	27	£36.99
Borage	<i>Borago officinalis</i>		6	2'	3	£4.11
Calendula	<i>Calendula officinalis</i>		20	2'	3	£4.11
California Poppy	<i>Eschscholzia Californica</i>		10	18"	3	£4.11
Chamomile	<i>chamomilla</i>		6	3'	3	£4.11
Chickweed	<i>Stellaria media</i>	X	0	2'	0	£0.00
Chives	<i>Allium schoenoprasum</i>	X	3	2'	3	£4.11
Clary Sage	<i>Salvia sclarea</i>		3	4'	3	£4.11
Cleavers	<i>Galium aparine</i>	X	0	3'	0	£0.00
Comfrey	<i>Symphytum officinale</i>	X	3	3'	27	£36.99
Dandelion	<i>Taraxacum officinale</i>	X	0	1'	0	£0.00
Dill	<i>Anethum graveolens</i>		5	4'	3	£4.11
Elderberry	<i>Sambucus nigra</i>	X	0	5'	0	£0.00
Fennel	<i>Foeniculum vulgare</i>	X	3	4'	3	£4.11
Feverfew (Bachelor Buttons)	<i>Tanacetum parthenium</i>		15	20"	3	£4.11
Lambs Ear	<i>Stachys byzantina</i>	X	2	1'	18	£24.66
Lemon Balm	<i>Melissa officinalis</i>		4	2'	3	£4.11
Lemon Grass	<i>Cymbopogon citratus</i>		3	4'	27	£36.99
Mexican Petunia	<i>Ruellia sp</i>		2	3'	18	£24.66
Mullein	<i>Verbascum thapsus</i>		2	5'	18	£24.66
Passion Flower	<i>Passiflora</i>		2	Vines	18	£24.66

Pleurisy Root (Butterfly Weed)	<i>Asclepias tuberosa</i>		3	3'	27	£36.99
Red Clover	<i>Trifolium pratense</i>		10	3'	3	£4.11
Rue	<i>Ruta graveolens</i>	X	1	3'	9	£12.33
Sage	<i>salvia</i>	X	5	2'	3	£4.11
Skullcap	<i>Scutellaria</i>		3	2'	27	£36.99
Spiderwort	<i>Tradescantia occidentali</i>		3	2'	27	£36.99
St. John's Wort	<i>Hypericum perforatum</i>		3	2'	27	£36.99
Texas Star Hibiscus	<i>Hibiscus coccineus</i>		2	4'	18	£24.66
Thyme	<i>Thymus vulgaris</i>		6	6"	3	£4.11
Turk's Cap	<i>Malvaviscus arboreus</i>	X	0	4-5'	0	£0.00
Wild Violet	<i>Viola sororia</i>	X	0	6"	0	£0.00
Witch Hazel	<i>Hamamelis virginiana</i>		1	5'	9	£12.33
Total			132		\$339.00	£464.43

Area 5

The Mini Orchard (Area 5) was the first garden planted. There are peach, almond, pomegranate, elderberry, persimmon, and blackberry trees and shrubs here. It is a favorite location for the chickens so chicken proof plants need to be planted here.



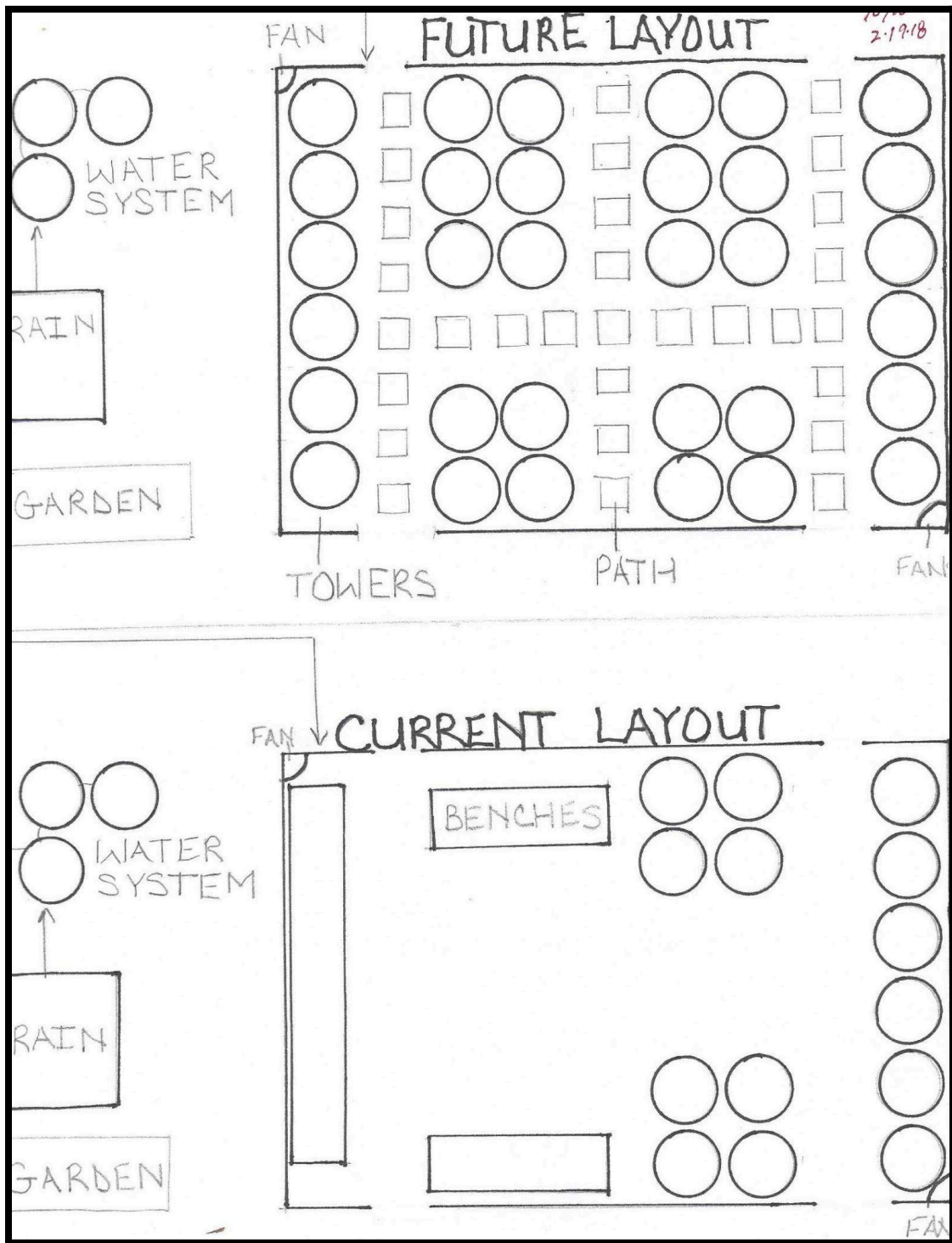
Plant List for Area 5

Plant	Latin Name	Existing	# Needed	Height	USD Cost (x \$9 for plant or \$3 for seeds)	GBP Conversion
Blue Vervain	<i>Verbena hastata</i>		3	4'	27	£36.99

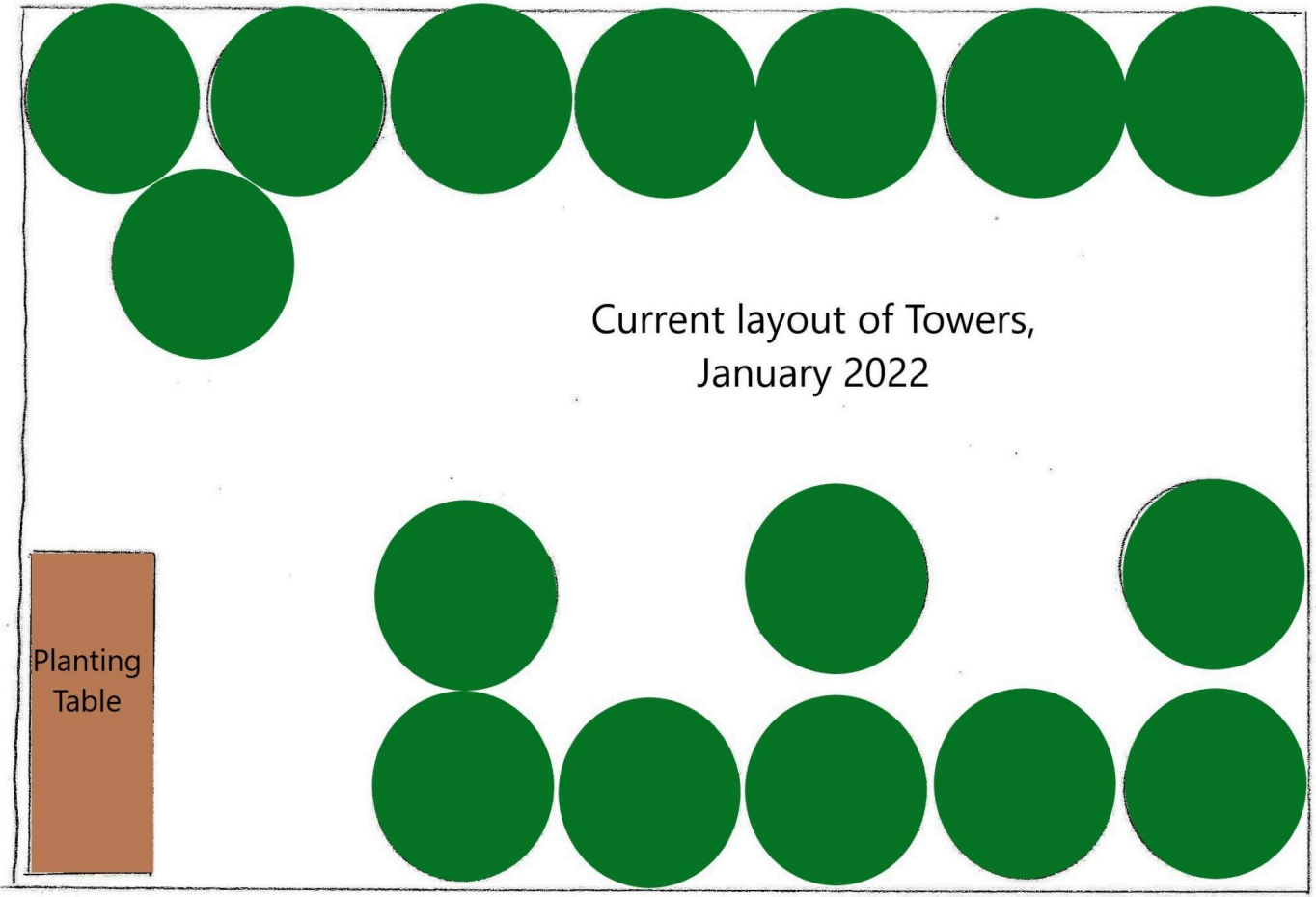
Calendula	<i>Calendula officinalis</i>		20	2'	3	£4.11
Catnip	<i>Nepeta cataria</i>		5	3'	3	£4.11
Chamomile	<i>chamomilla</i>		10	3'	3	£4.11
Chives	<i>Allium schoenoprasum</i>		3	2'	3	£4.11
Clary Sage	<i>Salvia sclarea</i>		5	4'	3	£4.11
Comfrey	<i>Symphytum officinale</i>	X	4	3'	36	£49.32
Elderberry	<i>Sambucus nigra</i>	X	0	5'	0	£0.00
Lambs Ear	<i>Stachys byzantina</i>		3	1'	27	£36.99
Nasturtium	<i>Nasturtium Officinale</i>		3	3'	3	£4.11
Oregano	<i>Origanum vulgare</i>		4	1'	3	£4.11
Red Clover	<i>Trifolium pratense</i>		15	3'	3	£4.11
Rue	<i>Ruta graveolens</i>	X	0	3'	0	£0.00
Spiderwort	<i>Tradescantia occidentali</i>		3	2'	27	£36.99
St. John's Wort	<i>Hypericum perforatum</i>		3	2'	27	£36.99
Texas Star Hibiscus	<i>Hibiscus coccineus</i>	X	0	4'	0	£0.00
Thyme	<i>Thymus vulgaris</i>		6	6"	3	£4.11
Valerian Root	<i>Valeriana officinalis</i>		3	2-3'	27	£36.99
Wild Violet	<i>Viola sororia</i>	X	0	6"	0	£0.00
Witch Hazel	<i>Hamamelis virginiana</i>		1	5'	9	£12.33
Yarrow	<i>Achillea millefolium</i>		2	3'	18	£24.66
Total			93		\$225.00	£308.25

Area 6

The Towers of Gavin (Area 6) consist of 18 aeroponic Tower Gardens. The area grew to 26 with plans for 32 Towers at one time, but it has now been decreased to better fit the space. Greens, herbs and veg are grown here. A shade structure was added to protect from the summer heat.



This is the original layout in February 2018 and the planned layout of 32 towers at that time.





Plant List for Area 6

Plant	Latin Name	Existing	# Needed	Height	USD Cost (x \$9 for plant or \$3 for seeds)	GBP Conversion
Basil	<i>Ocimum basilicum</i>		8	2'	\$3.00	£4.11
Borage	<i>Borago officinalis</i>		6	2'	\$3.00	£4.11
Calendula	<i>Calendula officinalis</i>		10	2'	\$3.00	£4.11
Chamomile	<i>chamomilla</i>		10	3'	\$3.00	£4.11
Chives	<i>Allium schoenoprasum</i>		5	2'	\$3.00	£4.11
Cilantro	<i>Coriandrum sativum</i>		10	3'	\$3.00	£4.11

Dill	<i>Anethum graveolens</i>		10	4'	\$3.00	£4.11
Fennel	<i>Foeniculum vulgare</i>		6	4'	\$3.00	£4.11
Feverfew (Bachelor Buttons)	<i>Tanacetum parthenium</i>		10	20"	\$3.00	£4.11
Holy Basil	<i>Ocimum tenuiflorum</i>		15	2'	\$3.00	£4.11
Lemon Balm	<i>Melissa officinalis</i>		6	2'	\$3.00	£4.11
Lemon Basil	<i>Ocimum citriodorum</i>		8	2'	\$3.00	£4.11
Lemon Thyme	<i>Thymus ×citriodorus</i>		5	6"	\$3.00	£4.11
Lovage	<i>Levisticum officinale</i>		2	6'	\$3.00	£4.11
Nasturtium	<i>Nasturtium Officinale</i>		10	3'	\$3.00	£4.11
Oregano	<i>Origanum vulgare</i>		6	1'	\$3.00	£4.11
Parsley	<i>Petroselinum crispum</i>		8	3'	\$3.00	£4.11
Peppermint	<i>Mentha balsamea</i>		4	2'	\$3.00	£4.11
Plantain	<i>Plantago major</i>		5	2'	\$3.00	£4.11
Spearmint	<i>Mentha spicata</i>		4	2'	\$3.00	£4.11
Thai Basil	<i>Ocimum tenuiflorum</i>		8	2'	\$3.00	£4.11
Total			156		\$63.00	£86.31

Area 7

Oliver's Garden (Area 7) is a design in this diploma process. Oliver, my grandson, has a desire to plant gardens as well as a forest. This area will primarily grow veg and sunflowers, but will also include some herbs.



Plant List for Area 7

Plant	Latin Name	Existing	# Needed	Height	USD Cost (x \$9 for plant or \$3 for seeds)	GBP Conversion
California Poppy	<i>Eschscholzia Californica</i>		10	18"	\$3.00	£4.11
Echinacea	<i>Echinacea purpurea</i>		6	3'	\$3.00	£4.11
Garlic	<i>Allium sativum</i>		10	2'	\$27.00	£36.99
Passion Flower	<i>Passiflora</i>		1	Vines	\$9.00	£12.33
Total			27		\$42.00	£57.54

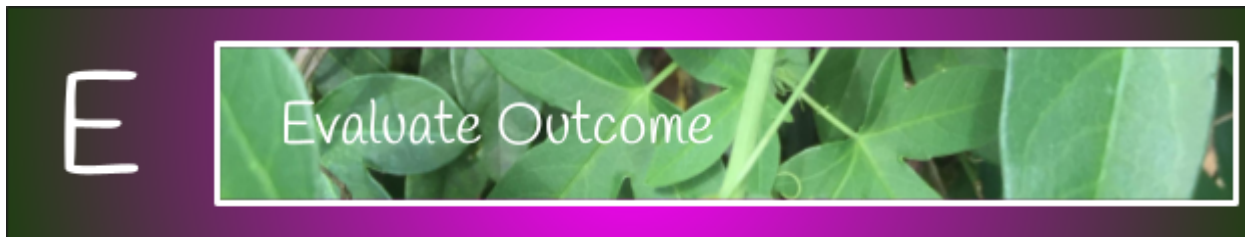
Area 8

The Fenceline Garden (Area 8) is a narrow strip that runs alongside the gravel road to the house. The city does not maintain it and there is room to plant some fruit trees and shrubs here. A few herbs will also be added.



Plant List for Area 8

Plant	Latin Name	Existing	# Needed	Height	USD Cost (x \$9 for plant or \$3 for seeds)	GBP Conversion
Passion Flower	<i>Passiflora</i>		2	Vines	18	£24.66
Red Clover	<i>Trifolium pratense</i>		12	3'	3	£4.11
Total			14		\$21.00	£28.77



Were the goals met? Yes, with the help of this design process I was able to create a design to grow as many of the herbs that my family eats (everything in the above lists which are culinary), uses for medicine (see criteria list), and are in my teas as possible. A secondary goal was to grow herbs for wildlife (lots are pollinators) and to enrich the soil (e.g. dandelion is a dynamic accumulator and clover fixes nitrogen) which has been met. I will be able to forage my gardens for whatever herbs are needed.

Feelings? When working on the overlays, I went through several attempts to create them. Hand drawn overlays did not scan into the computer well. The challenge surprisingly came down to a lack of confidence in rendering by hand. That led to several YouTube videos about rendering, and talking to a few people about it.

Recommendations included using Word and trying to improve my shading skills with an adult coloring book. Word solved my problems with the overlays. I emphatically said no to the coloring book idea as I have found them stressful. The next day Looby Macnamara released her Cultural Emergence Principles coloring book. The synchronicity of that was not lost on me. After a deep sigh, I ordered and downloaded her book which I will practice with regularly. My daughter gave me a set of colored pencils and another coloring book for Christmas.

I will continue to work on shading and blending colors with my grandsons and their nature journals in our homeschooling.

What were the challenges? I found this design the most challenging design I've done so far. It was difficult to stay true to the vision and goal and I often found myself lost or stuck. Decision making-criteria list and the decision matrix helped narrow down plants. Meeting with Lusi helped illuminate where I got off track.

My schedule changed during this design and that played a big role in my difficulty to stay aligned with my vision and goal. With my "school time" needing to slow down it is hard to dive back into the design each time. I'll need to work on my organization and notes to myself.

Another scheduling challenge was that our lives took an unexpected turn with a daughter moving in and a job layoff. When it became a possibility of selling the property, the motivation and drive to design faltered.

R



Reflect

What has changed since the beginning and what is that plan? Everything changed since this began it seems. Near the end of the design, we decided that we might be moving soon. Our home for two became a home for five. We would love to find more land, but have a smaller garden space. And then my husband suffered a job lay off. Currently we have no idea where we will be or when, but this will not be wasted. I'll use this design to guide me with new gardens.

How was this process and what would I do differently? It was frustrating, and enlightening. Challenges included: art, coloring, criteria, decision making, staying with goal, next steps, schedule, time, life. I will narrow my goal and vision even more next time.

Some discoveries along the way:

- Coloring, drawing and artistic expression
- The use of Word for creating overlays
- Sorting through choices using decision making criteria
- Unexpected sources of information including my workout group, my daughter, my teaching partner, and a coloring book.
- Realizing and accepting personal limitations

Project Schedule for Garden Areas

The following schedule is based on us staying at this property.

	Spring 2022			Summer 2022			Fall 2022			Winter 2022		
Area	March	April	May	June	July	August	Sept	October	Nov	Dec	Jan	Feb
1		Add compost & mulch	Plant	Plant				Plant				
2	Finish spirals if not already completed	Plant	Plant	Plant			Plant	Plant		Build trellis around windows for climbing herbs if needed		
3								Plant				
4			Plant in 2023	Plant in 2023								
5			Plant	Plant								
6	Plant	Plant	Plant	Plant			Plant	Plant			Clean towers	Clean towers
7	Prepare half of the garden spaces		Plant	Plant	Add the link to this design when ready	Prepare other half of garden spaces	Plant	Plant				
8				Plant in 2023				Plant in 2023				