

# Emerald Acres, Oklahoma

Freedom Farm Academy

## Design 9



### Designed by:

Lindsay -Head of Designs, Graham-Project Manager, Mike-Plant List,  
Annette Argabright-Designer, Cynthia & Graham-Narrative

---



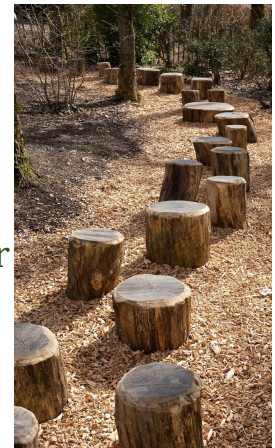
# DESIGN

## Concept Ideas

### Natural Play Area

Because they want to open to homeschool groups and permaculture groups for educational purposes, a small natural play area was included. Simple elements that could be created with repurposed materials were considered. It was decided that this area would be near the parking lot.

- A **stump path** will follow the curve of a sensory garden. The stumps could be of varying heights and widths. They need to be dug into the ground for stability and possibly secured into the ground. Tree services often have extra stumps available for a low cost and sometimes free.



- A **Tire maze or grouped tire swings** not only repurpose old tires, but creates years of play. Depending on how many tires are located, there could be tire swings in nearby trees.



- A tunnel of vines will be on the Mossy Connections trail.



- A **labyrinth** will be a fun addition to the entrance from the parking lot into the play area, on their way to the greenhouse. Use rocks found on the property. The labyrinth will need to be reestablished from time to time, or removed and a new element added in the future.



- A **Nature loom** can be along the Mossy Connections trail as well as in the medicinal gardens. Fallen flowers, branches, etc are woven into the loom creating a lovely piece of art that shares stories and offers birds nesting material. When full, the material can be placed in the composting area, and a new art piece begun.



- Sensory gardens will fill the Natural Play Area. These plants will include fragrant herbs, safe flowers, and interesting textures. They invite people to touch them and enjoy all that nature has to offer.
- Additional Resource: [www.naturalplaygrounds.com](http://www.naturalplaygrounds.com)

## Fence Post Use Ideas

There was, at one time, a fence between Lot 18 and the other two lots. This was taken down, but the fence posts remain. The following ideas were included for possible uses for those posts.

- Bottle trees



Bottle tree photo by Annette Argabright

- Insect hotels
- Bottlebrush buckeye *Aesculus parviflora* shrub (deer resistant edible nut, shade, 15ft wide) support



- Bird Houses, perches, feeders
- Hand tools drop spot
- Message box
- Mini Library

- Bike spoke trellis



Bike spoke photo by [Spatterdock](#) - little bit of paradise on Caddo Lake

## Syntropic Agroforestry for Future Tree Farm

A growing method primarily used in the tropics, syntropic agroforestry, could be used for the future tree farm in a simple layout.

Syntropic Agroforestry is a biointensive system of planting a productive forest, or tree farm, taking advantage of time producing a yield within the first 6 months until the



maturity of the system. Human management is important in this system to prune and chop and drop functional plants to continuously feed the soil and harvesting at the right time to allow for successional plants to grow in the right rhythm.



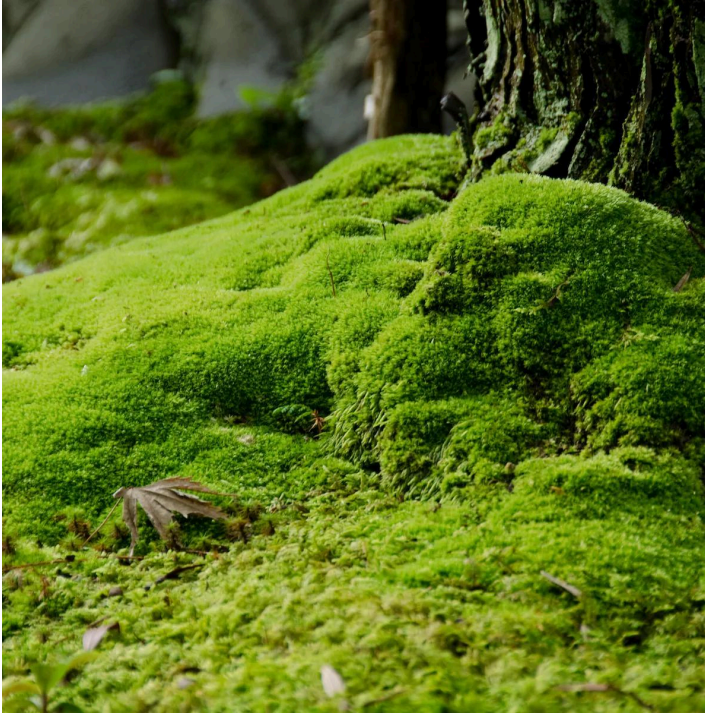
LUCEM FOTOGRAFÍA (photographer)

## Misc Suggestions

- Wattle Weaving was suggested and ultimately included in the narrative because of the beauty and resourcefulness of the project. This informative video on [Wattle Weaving](#) for raised beds was shared.



- Because of the abundance of moss on the land, we included this [Moss Recipe](#) to extend the moss to rocks and raised beds using this recipe and a spray bottle.



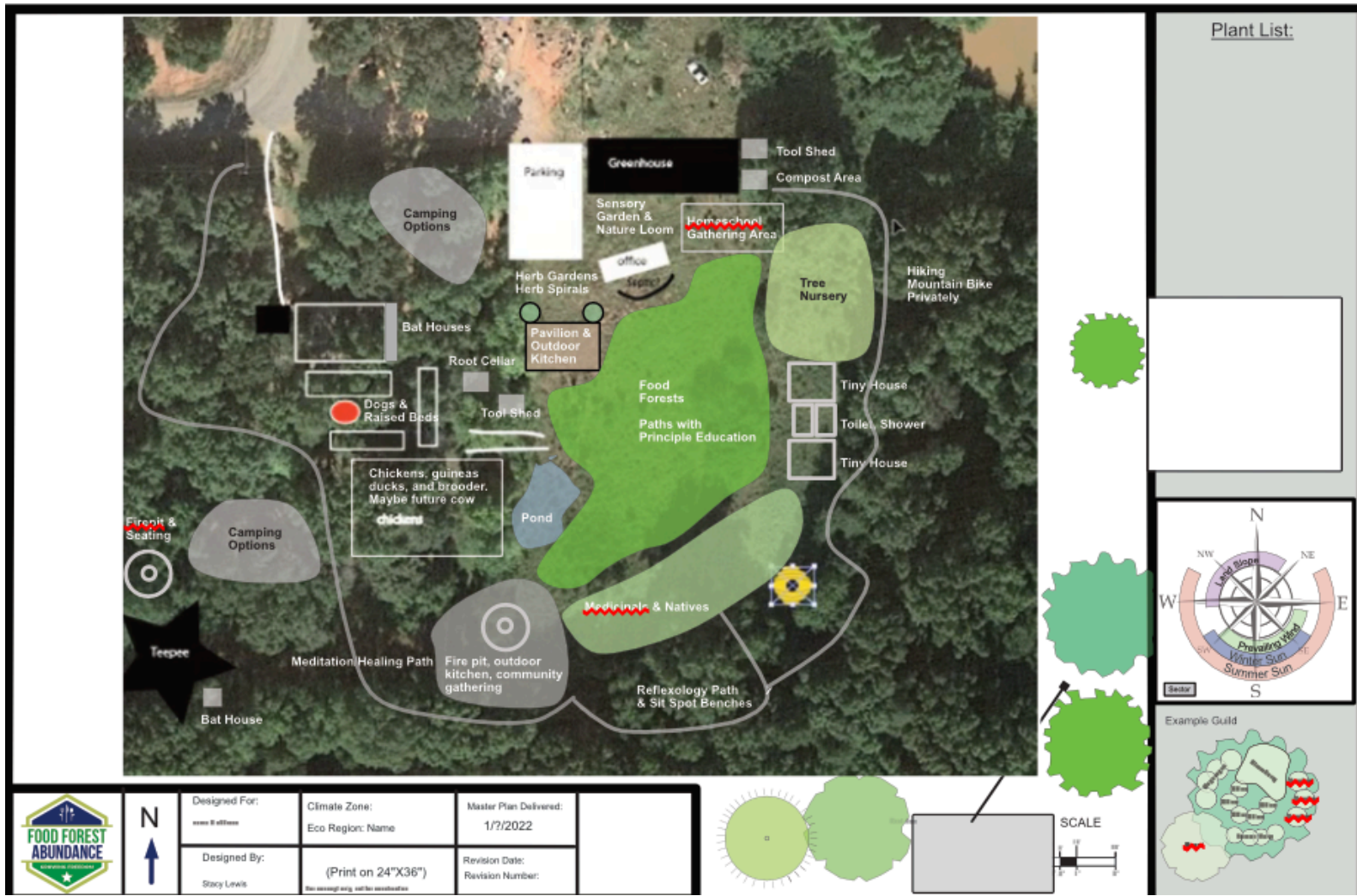
- Herb Spirals imitate nature's patterns of spirals and create microclimates for the herbs used most often. Taller plants grow near the top to give them space and not overshadow others. Vines can also be grown on a trellis at the top. Smaller, spreading, or cascading plants can grow on the lowest to the mid level of the spiral.



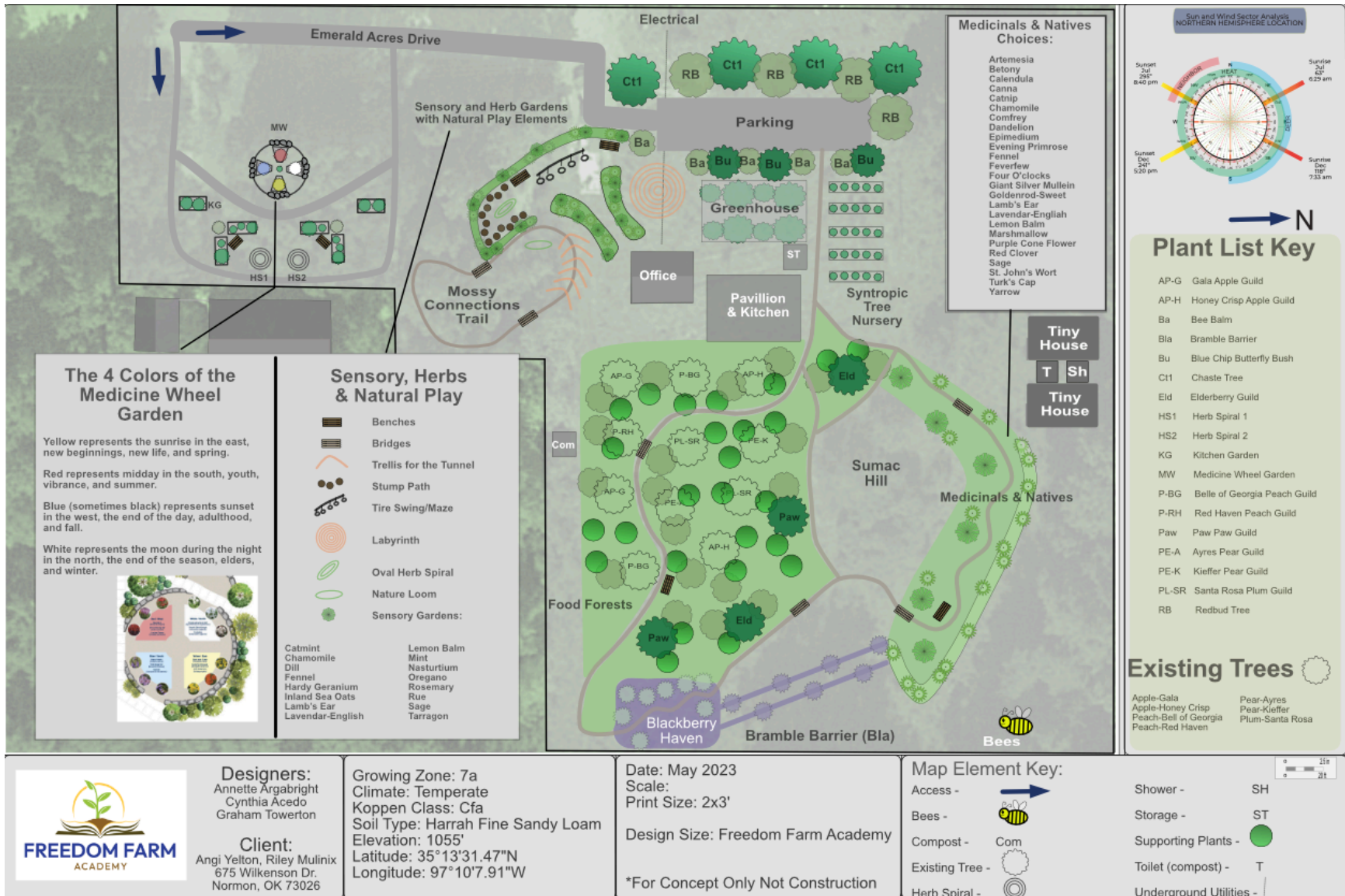


# Concept Design

This was sent on the site visit to discuss as they walked the land.



# Final Design



### The 4 Colors of the Medicine Wheel Garden

Yellow represents the sunrise in the east, new beginnings, new life, and spring.

Red represents midday in the south, youth, vibrance, and summer.

Blue (sometimes black) represents sunset in the west, the end of the day, adulthood, and fall.

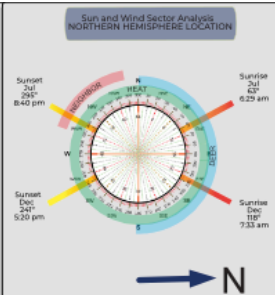
White represents the moon during the night in the north, the end of the season, elders, and winter.

### Sensory, Herbs & Natural Play

	Benches
	Bridges
	Trellis for the Tunnel
	Stump Path
	Tire Swing/Maze
	Labyrinth
	Oval Herb Spiral
	Nature Loom
	Sensory Gardens:

Catmint	Lemon Balm
Chamomile	Mint
Dill	Nasturtium
Fennel	Oregano
Hardy Geranium	Rosemary
Inland Sea Oats	Rue
Lamb's Ear	Sage
Lavendar-English	Tarragon

- ### Medicinals & Natives Choices:
- Artemesia
  - Betony
  - Calendula
  - Canna
  - Catnip
  - Chamomile
  - Comfrey
  - Dandelion
  - Epimedium
  - Evening Primrose
  - Fennel
  - Feverfew
  - Four O'Clocks
  - Giant Silver Mullein
  - Goldenrod-Sweet
  - Lamb's Ear
  - Lavendar-English
  - Lemon Balm
  - Marshmallow
  - Purple Cone Flower
  - Red Clover
  - Sage
  - St. John's Wort
  - Turk's Cap
  - Yarrow



- ### Plant List Key
- AP-G Gala Apple Guild
  - AP-H Honey Crisp Apple Guild
  - Ba Bee Balm
  - Bla Bramble Barrier
  - Bu Blue Chip Butterfly Bush
  - Ct1 Chaste Tree
  - Eld Elderberry Guild
  - HS1 Herb Spiral 1
  - HS2 Herb Spiral 2
  - KG Kitchen Garden
  - MW Medicine Wheel Garden
  - P-BG Belle of Georgia Peach Guild
  - P-RH Red Haven Peach Guild
  - Paw Paw Paw Guild
  - PE-A Ayres Pear Guild
  - PE-K Kieffer Pear Guild
  - PL-SR Santa Rosa Plum Guild
  - RB Redbud Tree

- ### Existing Trees
- Apple-Gala
  - Apple-Honey Crisp
  - Peach-Belle of Georgia
  - Peach-Red Haven
  - Pear-Ayres
  - Pear-Kieffer
  - Plum-Santa Rosa



**Designers:**  
Annette Argabright  
Cynthia Acedo  
Graham Towerton

**Client:**  
Angi Yelton, Riley Mulinix  
675 Wilkenson Dr.  
Normon, OK 73026

Growing Zone: 7a  
Climate: Temperate  
Koppen Class: Cfa  
Soil Type: Harrah Fine Sandy Loam  
Elevation: 1055'  
Latitude: 35° 13' 31.47"N  
Longitude: 97° 10' 7.91"W

Date: May 2023  
Scale:  
Print Size: 2x3'  
Design Size: Freedom Farm Academy  
  
\*For Concept Only Not Construction

- ### Map Element Key:
- Access -
  - Bees -
  - Compost - Com
  - Existing Tree -
  - Herb Spiral -

- Shower - SH
- Storage - ST
- Supporting Plants -
- Toilet (compost) - T
- Underground Utilities -

## Sensory, Herbs & Natural Play

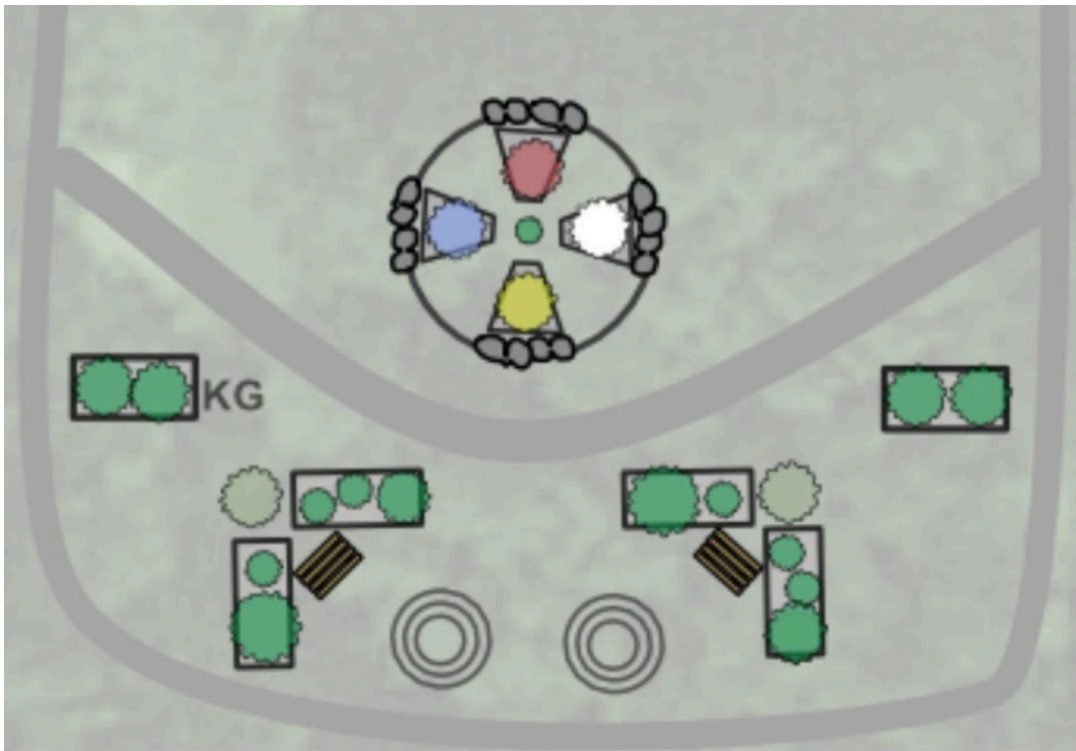
-  Benches
-  Bridges
-  Trellis for the Tunnel
-  Stump Path
-  Tire Swing/Maze
-  Labyrinth
-  Oval Herb Spiral
-  Nature Loom
-  Sensory Gardens:

Catmint  
Chamomile  
Dill  
Fennel  
Hardy Geranium  
Inland Sea Oats  
Lamb's Ear  
Lavendar-English

Lemon Balm  
Mint  
Nasturtium  
Oregano  
Rosemary  
Rue  
Sage  
Tarragon

## Sensory and Herb Gardens with Natural Play Elements





## The 4 Colors of the Medicine Wheel Garden

Yellow represents the sunrise in the east, new beginnings, new life, and spring.

Red represents midday in the south, youth, vibrance, and summer.

Blue (sometimes black) represents sunset in the west, the end of the day, adulthood, and fall.

White represents the moon during the night in the north, the end of the season, elders, and winter.



With the final design, a [narrative](#) and [plant list](#) were included.

## IMPLEMENT *and* MAINTENANCE

Angi and Riley, the stewards, intend to install the design, or most of it, themselves. As of this writing, they have planted the 12 fruit trees, and installed the highest swale by the road.

The following are the phases and simple maintenance we recommended.

### Phase 1 - NOW THROUGH OCT 2023

- Plant trees now (early june) OR wait til October if its hot
- Plant bramble barrier and establish path through bb haven
- Plant alliums around medicinal and native area
- Build raised beds for kitchen garden
- Build medicine wheel and put together herb spirals
- Build ponds and rain gardens and connect swales
- Create a watering maintenance plan that works for them
- Feed the newly planted trees with compost monthly

### Phase 2 - FALL & WINTER 2023

- Plant the rest of the trees and shrubs in October OR wait til April or May
- Plant medicinal and herb garden
- Plant parking area trees
- Establish pathways through food forest
- Plant Pawpaws and Elderberries
- Bat houses
- Decorate fence posts
- Tweak the watering plan for the season
- Feed the newly planted trees and plants with compost monthly
- Prune plants and trees as needed

### Phase 3 - NEXT SPRING 2024

- Plant medicinal garden
- Plant herb garden
- Plant parking area trees
- Plant [annual garden](#)
- Establish compost area
- Establish bridges and benches
- Feed the newly planted trees and plants with compost monthly
- Prune plants and trees as needed

### Phase 4 - FALL & WINTER 2024

- Greenhouse
- Pavillion
- Kitchen
- Feed the newly planted trees and plants with compost monthly
- Prune plants and trees as needed

### Phase 4 - FUTURE

- Nursery
- Tiny House
- Play Area
- Feed the newly planted trees and plants with compost monthly
- Prune plants and trees as needed

### Updated 2/18/2024

I recently met with Angi and Riley. They have completed the water management plan with a few tweaks, and have planted more trees. They told me they love the design, but have decided to put most of it on hold for now. They are ready to move forward with part of the installation and I will be helping with their plans.

# EVALUATION

Goals Reviewed:

Food security, sovereignty and freedom	We were able to give the stewards a food forest, kitchen and medicinal gardens design, a water management plan, and give them a plan to protect their deer.
Ceremonial Space, trails, community pavilion, tiny houses, play area	We were able to give them an educational component with an open learning area and play space in the design. The design included the pavilion and tiny houses.
Nursery space (greenhouse, shed)	Space for the greenhouse and shed were included in the design, as was a syntropic tree nursery.

We will have a consultation with them within the next year at their discretion. At that consultation the following questions will be covered while also being open to the client's feedback.

- Do you feel like your goals were met?
- What needs to happen to meet any unmet goals?
- Can we help to establish new goals?
- What have you been able to install? And are there areas of the design that you need help in installing at this time?
- Can we help plan a permablitz to help with any part of the installation?
- Are the deer still visiting? Have their numbers increased?

- Has the water been diverted from flowing through unwanted areas?
- Are you seeing lush growth in the food forested areas?
- Are your bees and bats established?
- Are you seeing a change in the ecosystem as the land heals?
- Are you hosting ceremonies? What elements have been established? And what are the next steps?

### **Design Photo Bibliography**

- Tree stump path: <https://1millionideas.com/25-backyard-playing-ideas-for-kids>
- Tire swing maze: <https://blesseddecor.com/30-inventive-and-cute-natural-playground-garden-for-kids/3/>
- Child in vine tunnel: [http://www.aperture-photos.com/index/portraits\\_and\\_people.html](http://www.aperture-photos.com/index/portraits_and_people.html)
- Labyrinth: photo by Annette Argabright
- Nature Loom: <http://www.earthloom.org/>
- [Tree Planting Guide & FAQs - Everest Trees](#)
- [Landis Land Information System National Soil Map — db-excel.com](#)
- [www.Weatherspark.com](http://www.Weatherspark.com)
- [www.suncalc.com](http://www.suncalc.com)
- Google Earth

## **TWEAKS**

I requested that the team be a part of the initial interview for future Freedom Farm Academy designs as it helps us to connect with the stewards and land earlier.

The narrative template was written using Canva during this design so that will be much easier to use in the future. The first half of the document will always be the same, the second half is personalized.

The plant list database that is in process was complicated during this design, and was ultimately discontinued.



These designs include a site visit which is invaluable for gathering accurate data.

Working as a team was, overall, very successful. We had weekly meetings to discuss updates and brainstorm areas where we were stuck.

## **Reflection**

“This design, along with 3 others, were the pilot designs, to create a written process for FFA2 design. Teams were chosen for each of the designs, and I was designated as the designer/renderer for Emerald Acres.” The process of tweaking the design process while designing was challenging. The next design will be a smoother process, but it doubled the time spent in designing this property.

The framework, OBREDIMET, might not have been the best for this writing. The use of EVALUATION twice is confusing, and for this design implementation and maintenance blended together.

Angi and Riley,

It was so great working with you! I love your property and everything you have going on over there. This project has been so much fun to work on. I especially loved researching the native bats in the area! Who knew there were so many and of so many varying sizes! Best of luck to you both on your enchanting Emerald Acres and please keep us in touch on the progress!

Warmest Wishes,

*Cynthia Avebo*

Angi and Riley,

Thank you for the opportunity to be a part of your Freedom Farm Academy project, supporting Cynthia and Annette to bring your vision into a form that will soon be realized and will provide you with many years of abundance and joy. We wish you all the very best as you develop your home and land into a haven that will sustain you and be a beautiful oasis for your visitors.

Best Wishes,

*Graham Foxton*

Angi and Riley,

I want you to know that being a part of bringing your vision to life has been a joy. Even though I did not get to meet you in person or visit Emerald Acres, I feel a connection. You have a magical haven and I love that you understand that and have created a relationship with the land, the plants, and the animals that live there. You truly are good stewards of the land. Thank you for that and for the opportunity to share in this journey with you.

Warmest Wishes,

*Annette Argabright*