

Issue 129 | Autumn 2016



Permaculture **works**

£1.50 • free to members

**Free
poster
inside**

**French
eco-nnection
Friends of
Permaculture
Convergence**



Follow us on



www.permaculture.org.uk



**Permaculture
ASSOCIATION**

“Our vision is an abundant world in which we care for the earth, each other and future generations, whilst living within nature’s limits.”

Board of Trustees: James Piers Taylor (chair), Philip Blandford (treasurer), Kim Glick, Sandy James, Graham Wood.

The Permaculture Association would like to thank: enCircle, Chris Penrose, James Pullein, Ilaria (PIRN intern), Matt and Jenny, all convergence crew and participants, Nell Bank Centre, Ferdy, Viv Chamberlin-Kidd, all our new members and renewers, Permaculture Ambassadors, teachers, and working group members.

Newsletter: Ryan Sandford-Blackburn, Richard Honey at dg3 design with thanks to all contributors.

We invite contributions from members. It’s your material that gives life to these pages, so please keep your articles and news coming. Please send contributions to communicate@permaculture.org.uk for the next issue, by 2 November for publication December 2016.

Small print: The views expressed within this newsletter are not necessarily those of the Permaculture Association. Opportunities and courses are listed for your information, so please check with the appropriate venue to verify any details. We don’t take responsibility for any courses listed herein.

The Permaculture Association is a company (05908919) and a registered charity (1116699 and SCo41695)



Design dg3
Printed on recycled paper by AKA, Leeds.
ISSN 1474-2381

Cover photo: Regional networking at the convergence.

Contents

Newsletter

Network news	4-6
Association news	7-8
Research update	9-10
Education	11
Individual member spotlight	14
Group member spotlight	15
Design feature	16-17
Scotland	18
Wales	19
International	20
Children in permaculture	21
Convergence review	22
Opportunities	23
Permaculture explained	24

Poster

Permaculture design at home & in the garden	1
Courses and events	2

Contact the Association

Permaculture Association, London, WC1N 3XX
t/f 0845 458 1805
e office@permaculture.org.uk
w www.permaculture.org.uk

All email addresses are followed by: permaculture.org.uk

Andy Goldring: [andyg@](mailto:andyg@permaculture.org.uk)
Beth Ramsay: [scotlandworker@](mailto:scotlandworker@permaculture.org.uk)
Cara Wilson: [wales@](mailto:wales@permaculture.org.uk)
Catherine Marsh: [diploma@](mailto:diploma@permaculture.org.uk)
Chris Warburton-Brown: [research@](mailto:research@permaculture.org.uk)
Dan Hurring: [events@](mailto:events@permaculture.org.uk)
Harriet Walsh: [office@](mailto:office@permaculture.org.uk)
Helen White: [finance@](mailto:finance@permaculture.org.uk)
Joe Atkinson: [learn@](mailto:learn@permaculture.org.uk)
Lusi Alderslowe: [children@](mailto:children@permaculture.org.uk)
Naomi van der Velden: [international@](mailto:international@permaculture.org.uk)
Nicola Bell: [membership@](mailto:membership@permaculture.org.uk)
Ryan Sandford-Blackburn: [communicate@](mailto:communicate@permaculture.org.uk)



Letter from the Coordinator

Andy Goldring, Coordinator / CEO

e: andyg@permaculture.org.uk t: 0113 230 7658

Friends of Permaculture will support the next generation

If you have been reading any of the recent climate reports, you will know we are entering difficult times. Frankly it makes concerns about Brexit seem quite trivial. But both issues do have a common denominator. The poorest will be hit the hardest.

People living in poverty are less able to access the information they need. Less likely to have good education options. Less able to access wholesome food. More likely to die younger. Less likely to be doing permaculture.

I don’t want to define people by what they haven’t got. Permaculture first investigates and identifies resources – much like the ‘Asset based approach to poverty reduction’ does. There are skills, there are resources and there is an enormous appetite for change. We need to identify limiting factors if we are to develop an effective response. Then give people the support they need to overcome them.

This November, the Association is launching a Friends of Permaculture scheme and we need your help. The funds will be used to support the next generation of permaculture activists, so that we can work in solidarity with communities facing the multiple challenges of poverty.

We have set a really ambitious initial target – 1000 new Friends of Permaculture by Christmas. This will raise £30,000 for Association projects and £30,000 for direct support to people and projects in disadvantaged communities.

Please tell your friends, tell your colleagues, and tell us about challenges you face and how the Association can help. This is a huge opportunity to learn and grow as a network, and to put our People Care ethic at the heart of what we do.

Andy

Join the conversation

twitter: [@permaculture_uk](https://twitter.com/permaculture_uk)

facebook: facebook.com/permacultureassociation

Network news

Steward Community Woodland Under Threat

On 10 August, our world turned upside down. Our Appeal for permanent planning permission for this educational project in low impact living was turned down by the Planning Inspector. He ruled that the low impact dwellings and way of life damage the character and appearance of the National Park.

The Enforcement Notices issued by the Dartmoor National Park Authority require us to dismantle our homes, our lives and this project over 12 months with the ultimate threat of fines and imprisonment if we stay.

After the initial shock and disbelief, we feel greatly heartened by the messages of support we have received. We value our community, our connection to this land and the wider community even more and are drawing strength from that. We feel determined not to allow all that we have built up over 16 years to be wrecked by the short sightedness of the DNPA and the Planning Inspector.

Details of Conservation Days and Volunteer Weeks are on our website. Add your name to the petition there too, urging the Dartmoor National Park Authority to continue to allow us to live here and manage the project.

Many thanks for your continued support, Rebecca, Merlin, Ollie, Daniel, Lorna, Son, John, Sharif, Fern, Seth, Mel, and all the kids & teens.

www.stewardwood.org
www.facebook.com/StewardCommunityWoodland

The Inkpot farm's turkeys win Great Taste award

Great Taste, the world's most coveted blind-tasted food awards, which celebrates the very best in food and drink, has announced the Great Taste stars of 2016. Out of 10,000 products to be judged, The Inkpot, Lincolnshire was awarded a 1-star Great Taste award for its Traditional British, Free Range Inkpot Turkey. The judges commented that it was "A well reared turkey, the flavour of the meat came through well." Congratulations to Hannah and The Inkpot team. They still have some turkeys from this award winning batch that they can courier frozen to anywhere in the country (and possibly beyond), so order one while stocks last!

www.the-inkpot.com



Those Plant People tour at Steeton

Those Plant People host tour

Over 20 people enjoyed a tour of Those Plant People, Steeton as an edge event to the convergence. Participants enjoyed learning about polycultural plantings in the yard garden, hearing about plant breeding experiments, and seeing the forest garden and vegetable garden. Pippa Chapman presented a session on plant guilds at the convergence, she encourages you to report on tasty varieties of perennial plants on The Plant Label Facebook: www.facebook.com/theplantlabel.

Regenerative Leadership Programme

The Regenerative Leadership Programme is a transformational learning adventure, lasting a year with a small group who will meet once per season. During the programme the group will grow their inner resourcefulness and resilience and develop skills to pioneer and lead effectively. They will work on regenerative projects in their personal lives,

their communities, at work or developing their own organisation or business.

An introduction weekend will be in Spring 2017 and the programme starts in September 2017 (dates to be confirmed). If you are interested in participating or contributing with ideas or support, please contact Monika: monika@regenerativedesign.co.uk.

WWOOF UK to collaborate on permaculture Learning and Network Demonstration

At the convergence, when I was chatting to Scarlett Penn, WWOOF UK Coordinator we realised that they should be talking to the LAND network about working in partnership – so Scarlett stopped setting up her stall in the reception and ran over to the LAND session that had just started – LAND: A Modest Proposal & Dreaming for the Next Phase

At the end of the convergence Andy Goldring (CEO) and Scarlett announced that the Permaculture Association and WWOOF UK will be working together in the coming year.



Rooting and Fruiting

Rooting and Fruiting start project to benefit hospital community

Beth, Director and Projects Coordinator at Rooting and Fruiting, has been hard at work completing staff and visitor engagement surveys to look at how food forests might fit at Calderdale Royal Hospital.

Beth has visited hospital departments to examine how the planted schemes can benefit patients and staff alike. Baseline mapping and ideas for site developments have been completed with Tomas Remiarz, using methods from his upcoming book. The project will include two rehabilitation spaces to encourage purposeful and meaningful activity, and a staff area, which will provide a quiet space with a covered, seated area. All of this will support physical, psychological and social well-being of patients, visitors and staff.

Preparations and planting will begin in late October. Alongside the Incredible Health Centres project, there will be meet-ups, workshops and events to get involved with. Information will be posted on: treesforwellbeing.wordpress.com.

Britain's first Savings Pool

After being inspired at the International Permaculture Convergence, Laura Stratford has initiated the first Savings Pool in Britain. A Savings Pool is a concept originating and popularised in New Zealand as an alternative to the lending system of banks. A group of no more than 12 people meet each month, develop trust, and start direct peer to peer lending with no interest. Joining with a small group of friends in the Lincoln area, Laura's group has been trying out how the setup would work for them, using test scenarios and will soon start proper having investigated legal structures and technicalities.

Help Village Farm save badgers in South Devon

"All the evidence is proving that these culls are incredibly ineffective and deeply inhumane... Sadly all our neighbours have signed up to the cull, meaning the land surrounding our farm will be scattered with cage traps and traversed by shooters waiting to take out any unsuspecting badger that crosses the area."

We have a number of badger setts on our farm and we desperately want to keep them. The only way we can do this is to feed our badgers to try to stop them wandering off our land; it's costing us roughly £20 per night, and that until 30 November quickly adds up. The other real worry we have is the shooters nocturnally trespassing onto our land, so we're investing in trail cameras to monitor our boundaries. We have several setts to monitor, so this means we need more cameras.

If you're against the cull and want to help protect badgers, perhaps you could help us save our badgers by donating towards kit and feed?

www.thevilagefarm.co.uk

Association news



Photo © OrganicLea. Groups like OrganicLea have great experience in engaging local people and creating real wealth through cooperative social enterprises and permaculture design

Friends of Permaculture

Permaculture has been accused of being predominantly white middle class. Whilst that is not completely true, there's more than a grain of truth in it.

You need time to invest in training and learning, money to attend courses and events, and enough social support to put your ideas into practice. Sadly we live in a country that is divided, and in which many people lack the opportunities and support to engage with permaculture. We want to change that.

In November this year we will launch the Friends of Permaculture scheme. 50% of funds will go to support Association led projects, 50% to directly support the work of community activists. We want to engage a thousand people to become Friends, and raise £60,000 in the first year. Friends of Permaculture will be a new way to engage with the Association. We ask all members to help us achieve this ambitious target. More information will be sent in October in the run up to the launch.

Learning Coordinator post coming soon

Joe Atkinson has been in the post for nearly 8 years and has decided that it's time for someone else to have a go! Joe will remain on the team delivering our IT and online working, and convening the Development team.

The new post job description will be written collaboratively by Permaculture Educators – the people this post serves – and progress was made on this at the Teacher's Meeting before the convergence.

We are going to offer three posts, one paid, two voluntary. The two additional posts will be Apprentice Learning Coordinator and Learning Coordinator Advisor. The post will be paid for by the new Permaculture Educators membership fees and sales of the certificate; the number of working hours will depend on how much support there is within the Association for a strategic learning post – apply self-regulation and accept feedback in practice!

New staff members join virtual office

We are delighted to welcome Cara Wilson (Wales Network Coordinator) and Beth Ramsay (ScotLAND Outreach Worker) to the team. They bring great skills and it's a real boost for the Welsh and Scottish permaculture networks. Both are working remotely, which takes the team to seven remote workers, and six based in Leeds. Soon we will have a fully online office, which will make it much easier for members to volunteer from anywhere in the world!

permaculture.org.uk

Nicola, Membership & Web Coordinator and Encircle, (our web company led by Darren – a Diploma Apprentice), have done a sterling job and the new website is now live. This follows a huge amount of work and some major technical challenges – a big thanks to them!

Thanks for your patience if you were trying to access the site during the swap over, and please do let us know if there are any bugs – we are aware of a few and are working to resolve them. It's fully mobile phone friendly and hopefully much more engaging. We now have seven websites – Home, Knowledge Base, Wales, Scotland, International, PIRN and IPCUK.

Membership

We have over 70 group and business members around the country. Do you know a business using permaculture or a local group that could benefit? Please tell them about Permaculture Association membership.

Group membership for £40 a year includes all the benefits of individual membership plus:

- **Group member feature in Permaculture Works and opportunity to share stories and news through our online channels.**
- **Up to five extra print copies of the newsletter.**
- **Access funding from Trusts and Charities that only give grants to registered charities via Project Support.**
- **Listing in the directory.**

Business membership for £80 a year also includes:

- **Member feature in Permaculture Works and opportunity to share stories and news through our online channels.**
- **Diploma – Up to three members of your business can apply to do the Diploma in Applied Permaculture Design under your Business membership.**
- **Help with your enquiries. We can guide you to a wide range of resources, recommend places to visit, advise on training opportunities, books to read, and provide broad technical assistance.**

See a directory of all group and business members at www.permaculture.org.uk/directory.

By listing online we save paper and space in this newsletter, and money in print costs and staff admin time.

Research update

by Chris Warburton-Brown, Research Coordinator

Research Team Activities, Summer 2016

In March Ilaria Noio arrived from Naples as the Permaculture International Research Network Intern, and my hours increased to 25 a week. These changes have made a real difference to the output of the research team. Ilaria has been doing a brilliant job building the PIRN website, which is now live at pirn.permaculture.org.uk, and organising the PIRN sub groups; with the addition of Climate Change we are up to seven groups.

I have been working to develop future projects, fundraise, and deliver the KEEP project, researching permaculture enterprise. Additional support from summer interns Jenny Mundy and Matt Vinson enabled us to tidy up and revamp the research webpages and conduct a social media campaign promoting some of our online resources, hopefully the first of many.

Future plans include launching a peer reviewed journal for PIRN, Permaculture Research, in 2017, and leading a big project on permaculture solutions to climate change; both depend on securing funding, as ever.

Sadly, changes in the availability of student finance mean that we have had to end our full time internships scheme for students from Bradford University Department of Peace Studies. Thank you to our wonderful past interns Anna Schmidt, Tom Kemeny and Nicola Graham, and to Ute Kelly for helping devise and organise the internship programme. We will continue to host Bradford students for short term placements over summer. With determination and commendable commitment though, Rhiannon

joined us in September working on Knowledge Management.

Future directions for the Permaculture International Research Network

PIRN currently takes up about two thirds of my time and all of Ilaria's, so it is very much the research team's primary activity. A recent visit by Jo Bridger from our PIRN funder, Lush Cosmetics, gave us a chance to think about the next steps for PIRN. We acknowledged that PIRN is still very much in a developmental, experimental phase, and identified eight separate activities which are currently being delivered under the PIRN umbrella. Depending on funding and energy, some of these might be dropped in 2017.

1. Autonomous sub-groups focussed on different research topics
2. A big project on a single topic with substantial external funding
3. Useful online resources such as the Research Digest and Knowledge Base
4. An international peer-reviewed research journal, online
5. Closer links/collaborations with other allies and networks
6. Face to face research meetings as part of the International Permaculture Convergence and regional convergences
7. A monthly e-bulletin for all PIRN members
8. Online literature reviews of various topics, hyperlinked to the original sources

The KEEP project

This has been a collaboration between the Permaculture Association and Kingston University, and as far as we know is the first permaculture research project in the UK funded by a research council; hopefully the first of many!

I have been working with Mara Iskandarova and Professor Audley Genus in a very fruitful partnership, researching the current state of permaculture enterprise in the UK. We identified over 160 permaculture enterprises and interviewed 20 of them, and have learned a great deal.

The next stage is the production of The Permaculture Enterprise Handbook in the Autumn, which will be full of tips on how to set up and run your own permaculture business. It was great going to the National Diploma Gathering in Bristol to discuss the project with a very lively audience who were full of helpful advice on the project and the handbook.



Kerswell Forest Garden transformed – at the beginning and three years on

Forest Garden Trial Five Year Report

Ilaria's predecessor as Research Intern, Silvio Volkmann, did a fabulous job pulling together this report. The report covers the first five years of the ten year Forest Garden Trial conducted by the Permaculture Association. The trial follows ten forest gardens in the UK from implementation to maturity, and is now at its half-way point. The study concludes that despite the lack of resources to support the trial, a lot has been achieved and a number of valuable lessons have been learned for other forest gardeners. Important lessons have also been learned about how to conduct such research trials. You can read the report online.



Chris leading a session on the KEEP project at the convergence

Membership of the Permaculture International Research Network is free and open to anyone. Join on the new website pirn.permaculture.org.uk

Education



Education – teachers group. Photo Lorraine Ishak shared under Creative Commons attribution

Teachers agree a way ahead for permaculture education

25 permaculture teachers agreed priorities for permaculture education at a teachers meeting the day before the convergence in Ilkley.

Key next steps include:

- Starting a new “Educator” membership type, articulating shared vision, mission and aims statements for the permaculture education community;
- Designing a governance model for the community;
- Exploring and developing continuing professional development and peer mentoring models;
- Developing online learning resources.

Participants also reviewed the responses to the recent survey about which benefits the Educator membership type should offer. They also explored pricing levels for the new membership type.

There were discussions on a wide range of topics from supporting dyslexic learners to

the role of the Education Working Group; from promoting the Diploma during PDCs, to global collaboration.

A full report will follow when the sessions outputs have been fully collated and written up. Keep an eye on e-bulletins, Facebook and the website.

Certifying Teachers Register goes live

The new Certifying Teachers Register went live at the beginning of July. Members of the register are authorised to issue the Association’s Permaculture Design Course certificates. It already has 14 registered teachers, with more applicants waiting to join. If you are a teacher and want to issue the Association’s PDC certificates, you need to apply to join the register. It’s a quick and easy process.

See “Who can award certificates” under “Certification from the Permaculture Association” in the education section of the website.

Individual member spotlight

Dear fellow permaculturists

This is Malika from the Netherlands. Thank you for the opportunity to introduce myself as a new network member.

The “permaculture bug” infected me back in 1997, during an “EcoLand & EcoForest” tour to Germany, Italy and France, during my Master studies in Forestry and Organic Agriculture at Wageningen University. The permaculture ethics of Earth Care, People Care and Fair Shares deeply resonated with my inner understanding – a love for all of Life, and a sense of the abundance that could be ours, all over the planet, if only we know how to co-operate with Nature.

I was hooked for life: permaculture has been a major influence guiding my life and work ever since. What started out with a conceptual research and experimental initiative in forest gardening and food growing in general, soon broadened to include the whole range of topics connected to ‘sustainable settlement design’, dedicated to change on both outer and inner planes. I’ve lived in ecovillages in Russia, Portugal (Tamera) and the Netherlands.

I’ve worked as a forest garden designer, researcher, polyculture gardener, policymaker, pig whisperer, writer and translator, herb spiral builder, transition town initiative co-ordinator, teacher for children, youth and adults, mantric dance and meditation guide, seed saver, caregiver, and a lot more; Sometimes on my own, most often with a dedicated team or community of likeminded spirits.



Malika walking with pigs at the Pig Project

After travels within Europe and Brasil, India and the USA, I returned to the Netherlands in 2014, where I am now working on the design, establishment and teaching of food forestry. In September 2015, I attended the International Permaculture Convergence in London and was delighted to see the range and depth of topics the permaculture movement covers. I’d love to strengthen the connections and work together on creating viable systems for a future worth living!

Malika Cieremans
www.CircleEcology.org

Group member spotlight

Wild Harvest School of Self-Reliance

Wild Harvest School of Self-Reliance was founded in 2006 on the North Yorkshire Moors by myself, Di Hammill. I was teaching basket weaving, candle making and wild food. After doing the Permaculture Design Certificate with Patrick Whitefield at Ragmans Lane in 2006 I decided to move into a remote off-grid caravan with three young children for two years and believe the only way we survived was because I used permaculture in our life...

Now near York and much expanded, Wild Harvest offers tipi accommodation and numerous courses. The most popular course being the Self-Reliance Crafts Retreats, which is aimed to empower students with new self-reliance skills such as basketry, wild food and medicine, making your own heat and light (fire-lighting and candle making), natural toiletries, leather work, woolcraft, wild brews, ragrugging and introductory permaculture, natural hen keeping and natural beekeeping.

The courses are also designed to relax and refresh students through yoga, massage and healthy food – people care – so you can go



Wild Harvest seen from the air

out and shine your light, spreading your new knowledge when you go home. We also run Introduction to Permaculture days and soon Introduction to Permaculture weekends. We are looking into offering a full Permaculture Design Course at some point in the future.

Our site is a small permaculture garden on our farm. It has a straw bale garden – watered from a pump and seeper hose from the pond. There is soil making, worms, usable perennial and self-seeding annual beds where guests pick flowers and herbs for eg. ointment making. Hens and ducks do a weekly sweep and along with rabbits eat the weeds we throw them. We are also building a small domestic sized aquaponics system, and a couple of natural bee hives. We are running a skep-making course soon too.

Wild Harvest group



French eco-connection

Designer: Douglas Beal

Project: Renovation of a 19th Century terraced house with shop/bar front and small garden, St Jean Le Thomas, France.

Budget: €40,000

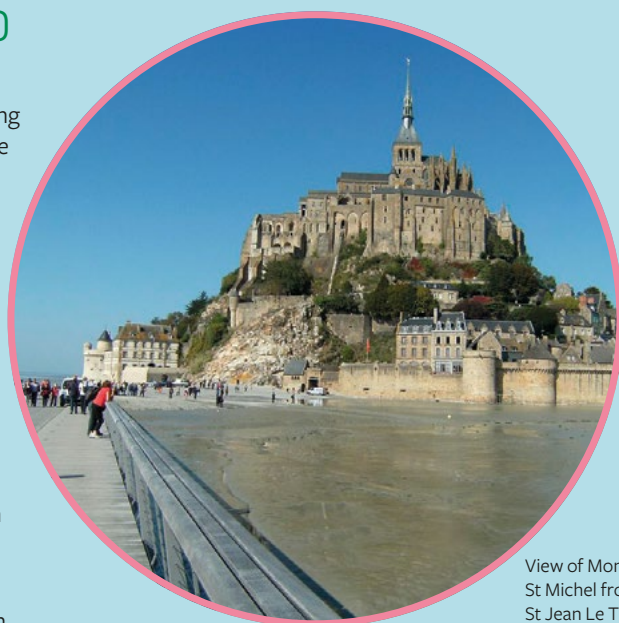
This was my first eco-build, having worked for many years as a more conventional designer-builder. Just as I was about to start rushing into this project, a friend told me about an MSc course at the Centre for Alternative Technology (CAT). I decided to put the project on hold and use the course to learn about environmental issues and buildings. This also gave me over a year to observe and ponder on how to approach the renovation.

Design methodology

I employ an action centric design methodology I call SORDID: Spontaneous, Organic, Resource Driven and Inspired Design. See what is available on your resource palette and design your solution from within.

First thoughts

Good site organisation and working from the top down, and then outwards from the centre



View of Mont St Michel from St Jean Le Thomas

of the building to the garden was deemed the best plan on such a tight site. I wanted to try new methods and materials that were marginal. Although I had set myself a monetary budget and had not much option to overspend, I was prepared to see much of my time as a learning experience and felt

“I employ an action centric design methodology I call SORDID: Spontaneous, Organic, Resource Driven and Inspired Design. See what is available on your resource palette and design your solution from within.”

implementation should be experimental. Keeping good relations within my new neighbourhood was also essential. Another key decision on this project was to slow down my previously hasty approach to implementation and be prepared to creatively use and respond to change.

Challenges

The house was very hard to heat with a chaotic and impractical layout; the original two-up-two-down house had been extended and linked in an ad hoc way to an existing outbuilding. There were seven different types of roofing material out the back and the main house needed attention. Due to its proximity to an 11th Century church, any plans for the site also had to be approved by historic

monuments officials within the local planning authority.

Resources

My home and depot were only an hour's drive from the project and on the visits to the site I was able to familiarise myself with builders merchants, junk and timber yards enroute. Over time, I befriended a builder, who left old doors in my garden and my neighbour Andre had a lovely supply of old planks, beams and local information.

Family, friends, neighbours, learning volunteers, local tradespeople and a few itinerant labourers I'd met at the Centre for Alternative Technology (CAT) all pitched in on this renovation. Sons of the local roofer gave me lessons in zinc work (in order to comply with local planning legislation, all newly created roofs had to be zinc). A friend and I also organised a hemp and lime workshop for a few days for CAT MSc students.

Experimental techniques

Mixing chopped hemp with lime and water creates a sort of lightweight concrete. When dry it is very good at regulating humidity, it has insulating properties and is allegedly carbon neutral. Convinced of its appropriateness in renovation it was used extensively. A slab of 'hempcrete' was laid on a bed of stones (and graded site rubble) with a perforated tube running through it, designed in a way to create under floor ventilation and reduce damp. Earthen 'quarry' tiles were laid on a bed of lime mortar and when dry these were sealed with some warmed old linseed oil that Andre had stored for decades in a U.S. Army jerry can. A lighter hemp mix was cast in a timber framework to seal and insulate many of the existing stone walls. This was then finished with lime plasters and washes. Since 'St Jean', I have discovered earth mixes which reduce the environmental impact further and are less hazardous to use.



“Chopped hemp is particularly good in damper areas. However, this less vulnerable room was created out of all the wood shavings and scraps saved on the project. The posts are driftwood, one of which was part of a chestnut mussel farming pole.”

Further experimentation with leftovers

Chopped hemp is particularly good in damper areas. However, this less vulnerable room (see above) was created out of all the wood shavings and scraps saved on the project. The posts are driftwood, one of which was part of a chestnut mussel farming pole. An old door is extended and used as shuttering when casting the lime and shavings mix. The room became an ensuite toilet and shower. An extractor fan was never installed; instead the wall seems to manage the humidity without detriment.

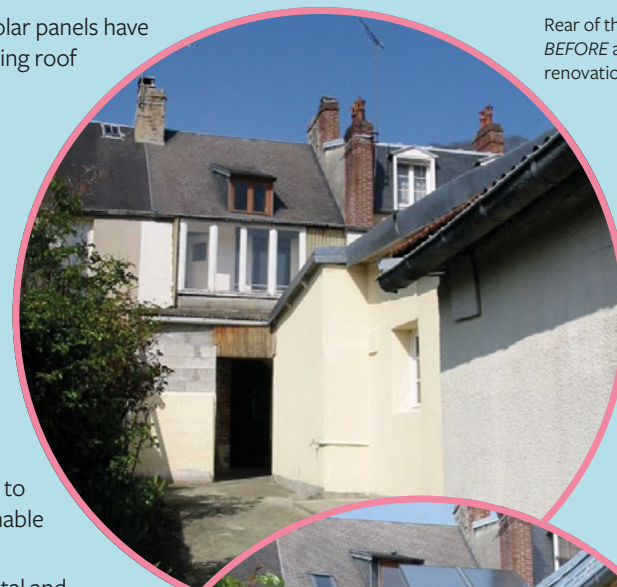
Before and After

The local chestnut cladding hides 100mm of high performance mineral wool insulation. 70m3 of different types of insulation were used in the renovation. Lots of the old single glazing is cut into slate sized pieces and combined with zinc scraps to create a transparent roof over the recessed space defined by the original building, making a nice

place to sit or hang washing. Solar panels have been installed on the south facing roof space.

Some reflections after implementation:

- A sense of moral duty is required to dramatically reduce the environmental impact of our property and land.
- DIY is the only way to make this affordable and keep to a minimum any potentially unmanageable personal debt and the need to pursue essentially unsustainable forms of employment.
- Ideas need to be experimental and reversible, using locally sourced, reclaimed, natural and novel materials. Always imagine how you would take apart what you make.
- Land for development needs to be made more available as plots for people wanting to make their own homes, as opposed to in the UK where large developers dominate.
- Let the design process and solutions emerge with the material and human resources available. A perfect finish is an ideal concept and only skin deep, accept the best efforts of those who helped.
- Encourage the crossing of trade demarcation barriers in order to demystify and give a greater holistic vision of a project.
- Accept you are constantly learning and there is no ideal solution.
- Integrate and befriend the community around, it is amazing what useful gifts of knowledge and materials you might befall, be grateful and return gestures in kind.



Rear of the property BEFORE and AFTER renovation



Douglas Beal accredited his Diploma in Applied Permaculture Design in April 2016. The above is an abridged version of one of his completed portfolio designs. To find out more about the Diploma, see www.permaculture.org.uk/diploma or contact [Cath diploma@](mailto:Cath.diploma@permaculture.org.uk)

Scotland

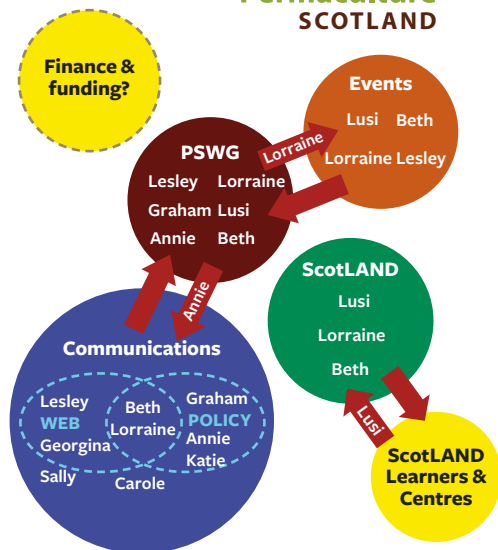
scotland.permaculture.org.uk



Working with sociocracy

The Permaculture Scotland Working Group met in Dumfries to celebrate the success of the gathering in June and to learn more about sociocracy and how we can apply it to our Working Group.

We created a design of the circles (see opposite). One of the great things about this structure is that people can join in a sub-group as opposed to attending all meetings. Please email scotland@permaculture.org.uk if you are interested in helping out in any of our circles!



Welcome to new ScotLAND Outreach Worker

We are delighted to have Beth Ramsay join our team both joining the working group and in the paid role of Outreach Worker, in which she will be reaching out to hard to reach and disadvantaged groups. Beth will encourage people to visit ScotLAND Centres and support them with up to £150 towards their travel expenses, and £100 to the host Centre to pay for their time. Get in touch if you are interested in organising such a group visit.

Beth is starting to design the next phase of the project in more detail, starting with a survey. So if you are a Learner or Centre expect a call some time soon so we can find out how we can better support you.

Abundant Borders

After thirty years plugging away in the Scottish Borders we do at last seem to have built a body of interest. Strange when people have come from all over the world to see what we do that locals haven't done. Our endeavour is labelled Abundant Borders. Driven by the neglect of many through changes in the benefit system, failure of education and consequent lack of prospects for many in our society we are going to transform food banks from folks who give away parcels of dried and tinned food to engaging with people in our community suffering food poverty by teaching gardening and cookery.

If you want to know more while we're building the infrastructure of this project, please get in touch.

Graham Bell
graham@grahambell.org

Wales

wales.permaculture.org.uk



Introducing Wales' new paid staff member, Cara

The lucky new Paramaethu Cymru Coordinator is Cara Wilson.

Cara will help all groups and projects link up, learn and share with each other.

"I am here to support volunteers already working on coordination, web, education and regional groups. I currently work one day a week, so a big task is to fundraise, and find funds that local groups can use. I met some members at the Wales Gathering in July. Now I want to hear from you – good ideas, questions, needs, offers – get in touch!

Cofion cynnes, Cara Wilson

Structuring Paramaethu Cymru to connect with each other and make decisions

At the Lammas gathering in June, we talked about the structure of Paramaethu Cymru – how do we connect with each other and make decisions? We now have a coordinator, but she is part-time and much of the work will still need to be done on a voluntary basis.

We are looking at a structure therefore where working groups concentrate on particular tasks, such as setting up low cost design courses, or producing bilingual materials, and feed into a central coordinating group.

A couple of these working groups have already started to form. One is called Dysgu, from the Welsh word which means both 'to teach' and 'to learn' and it will be looking at how to train more teachers in Wales, how to

bring a bilingual element and Welsh context into courses, training people to go into schools and looking at community education, amongst other things. Another is focusing on Welsh language and culture, looking at how good design can be informed by indigenous traditions, both agricultural and social.

Regional networks are also going to be important and will link into the central circle, so if you are interested in seeing more local activity, please get in touch. We are already looking forward to holding a national gathering in the north and we're excited about making new links there.

These groups welcome new members so please get in touch if you would like to join one, or if you have an idea for a new one.

You can email Cara at paramaethucymru@permaculture.org.uk



Group discussion at the Permaculture Wales Gathering earlier this year

Follow Welsh news at wales.permaculture.org.uk
Get in touch with us at paramaethu.cymru@gmail.com
Newid dy fyd gyda ni.

International

international.permaculture.org.uk

African Permaculture Union



Supporting farmers in Africa

The African Permaculture Union was formed at the International Permaculture Convergence UK, 2015 to help connect permaculture organisations and people across Africa <http://africanpermacultureunion.org> Supported by the Permaculture Association (Britain) one of the key founder organisations, Permaculture Research Institute Kenya, has just gained funding to start an amazing new project called permEzone. Working with existing permaculture centres, it sponsors smallholders/family farmers to learn about permaculture design. Hugh Kelly, founder of permEzone:

“Because food security and environmental health go hand in hand, our goal is to build expertise in farming communities around the world about practical options for improving yields and livelihoods using ecologically regenerative approaches.”

permEzone is a non-profit program to train and support family farmers in designing sustainable food systems, and in the use of mobile phone technology to share knowledge

“The world’s 500 million family farmers could be a powerful force for environmental regeneration. Instead of encouraging farming methods that harm the environment and bring mostly short-term benefits, we can help bring sustainable improvements in yields and livelihoods by demonstrating that improved food security and a healthy environment go hand-in-hand.”

and experience. A mobile phone platform, using technology that can benefit the most remote and resource-poor communities, will support the farmers in accessing and sharing information and in designing model farms.

They will then be supported in sharing sustainable farming practices within their community.

They are delighted to announce that they now have the funds needed to launch the initial pilot stage. UK-based non-profit Garden Africa has generously contributed matching funds of £10,000 to the Permaculture Research Institute Kenya for the first two-years of permEzone with the Drylands Natural Resources Center. They are now actively planning for the pilot to get started! With the success of the pilot, permEzone will be looking to expand this model throughout Africa and beyond. To learn more, contribute or get involved visit www.permezone.org

Children in Permaculture



The Children in Permaculture team gathered for a creative process using Head, Hearts and Hands

The interest and enthusiasm for Children in Permaculture is amazing! The Survey of Resources for engaging children in permaculture we hoped by the end of the project would have 500 downloads. In the first 3 months it has already been downloaded 3200 times!!! Thank you to all the wonderful supporters!

If you would like to read this excellent resource, please go to: <http://bit.ly/cipsurveyofresources>

From the abstract: “Findings include: There is no written pedagogy for sharing permaculture with children. There are many high quality resources in the Living Nature theme (110 resources are listed), whilst there is a dearth (with only 14) in the Design theme. There is a large difference in availability of resources between languages, with 180 resources identified in English and only 22 in Romanian.”

The team have been busy writing case studies which will be available on our website www.childreninpermaculture.com this autumn, and have been designing from pattern to detail for curricula, session plans,

and activities to help support educators to engage children in permaculture.

There was a workshop about engaging children in permaculture at the UK Convergence, Ilkley and at the European permaculture convergence in Bolsena, Italy. After which we met for 6 days in Italy with project partners from Italy, Czech Republic, Romania, and Slovenia. At the time of writing we haven’t yet met, but we are confident this will be a juicy creative time for the intellectual outputs!

Italian Connections

Beside the beautiful lake Bolsena, the Children in Permaculture team presented the project, facilitated group work and led activities for children every day in the European Permaculture Convergence. Italian, English and French speaking children exchanged games, stories and songs, and made beautiful crafts.

The team then met for 6 days to continue our pioneering work, overlooking the beautiful lake.

Convergence review

The British permaculture convergence took place 2-4 September at the Nell Bank Centre, Ilkley. Over 325 participants came together to learn, discuss and plan, and have lots of fun, particularly at the Saturday night Cabaret.

Being at Nell Bank, a spectacular venue, gave participants a feeling of creativity and calm; the undercover spaces meant the rain couldn't dampen our spirits (as hard as it tried on Saturday). Thank you to the Nell Bank team, to the hard-working crew, and to those we shared the space with - the owls, heron, and the now famous Billy the rabbit.

We look forward to receiving, reviewing and responding to feedback gathered through the post-event survey, distributed to participants. We also want to hear your thoughts, to ensure future convergences and other events meet your needs and expectations.



Over 250 people networking in their home regions

We are hoping for the convergence to be an annual event from now on. We are happy to hear from members with suggestions of future venues - if you know of somewhere that could host a convergence or other Permaculture Association events, please get in touch.

We hope you will be able to share permaculture knowledge with others at an event in the not too distant future. We are laying the foundations for something in May 2017, watch this space.

You can list events at www.permaculture.org.uk/events with your members login.

See this issue's poster for events (and courses) happening soon.

See more photos, plus presentations and videos online www.permaculture.org.uk/convergence-2016



Pond dipping, just one of the fantastic children's activities at the Convergence

Permaculture Association AGM 2016

Saturday 19 November 2016 Graceworks, Leicester

www.permaculture.org.uk/agm-2016

We will be sending proxy voting forms on the 21 October.

If you want to stand for election as a trustee or make a proposal, please send information by 14 October. Ideally please contact Andy Goldring first.



Top: photo Lorraine Ishak Creative Commons Attribution-ShareAlike



Left: Graceworks garden club
Far left: Composting at Graceworks

Opportunities

Do you need project support?

Small projects often lack the ability to bid to trusts and charities, who often prefer to give money to registered charities. We have been supporting projects since 1992 to access these funds. If you want to know more, contact Andy Goldring.

Develop and share communication skills

The Permaculture Ambassadors project is an opportunity for individuals and members of local groups to work together, developing their own skills and creating collective publicity resources.

Following from the first Gathering at the convergence this September, there is now a core group of members taking initial activities forward. There is a good pattern plan but ample detail to be filled in creatively. In the not too distant future there will be online learning resources and discussions, and regional face to face gatherings for Ambassadors to meet and to share knowledge and good practice.

Full details of the project and how you can get involved at www.permaculture.org.uk/ambassador

Creatively use and respond to change



Food bank: Over one million three-day emergency food supplies were given to people living in food poverty in 2015/16

I left Britain on the day of the Brexit announcement. A train to Spain for a conference in the beautiful city of San Sebastian, to explore with people from around the world the Art of Collaboration!

Away from the turmoil, joy, sadness and soul searching resulting from the Brexit result, I had time to think about how we – as the Permaculture Association – might respond. In non-violent communication, the theory goes that our emotions are signals that we have unmet needs. This makes sense because there are a lot of unmet needs.

There are many children that go to school hungry, with an estimated 28% of all children living in the UK now living in poverty. Over one million three-day emergency food supplies were given to people living in food poverty in 2015/16. The poor are criticised and made to look stupid on TV and in the press. Over 800,000 people now work on zero hour contracts, leaving workers in a state of constant insecurity.

The task of renegotiating the UK's relationship with the EU and rest of the world is important, but I would argue that there is a much deeper task now before us. We can sink into despair, or we can mobilise our collective intelligence and re-imagine the country as the place we really want and need.

We need to make this a turning point for a better future. Permaculture has an important role in this. We are designers, we do process, we have a positive vision for the future. Add to that over 35 years of experience and a wealth of amazing projects and practitioners to draw on, and it is clear that we have all we need to make an important contribution.

We are putting initial plans together now, including developing a Friends of Permaculture scheme that will raise funds for community activists. We are talking to other networks and initiatives to bring together the training and support they will need to be effective.

There is an opportunity to grasp, a vision to articulate, needs that need to be met. David Holmgren's twelfth permaculture principle is 'creatively use and respond to change'; now more than ever, we need to put our principles into action.

This is a slight deviation from the usual format of this feature. It is an edited version of Andy Goldring's Open Letter to Permaculture Association members. The full, original post can be read at blog.permaculture.org.uk

From the next issue we will start to explain Bill Mollison's permaculture principles, with examples from our network.